

# Landscape Design

Creating outdoor spaces to be enjoyed by people and wildlife  
across time that are functional, environmentally responsive  
and beautiful

# Landscape Design

Creating outdoor spaces to be enjoyed by people and wildlife  
across time that are functional, environmentally responsive  
and beautiful

Minimize cost

Minimize negative environment impact

# Design Process

Program Requirements  
(What the client wants)

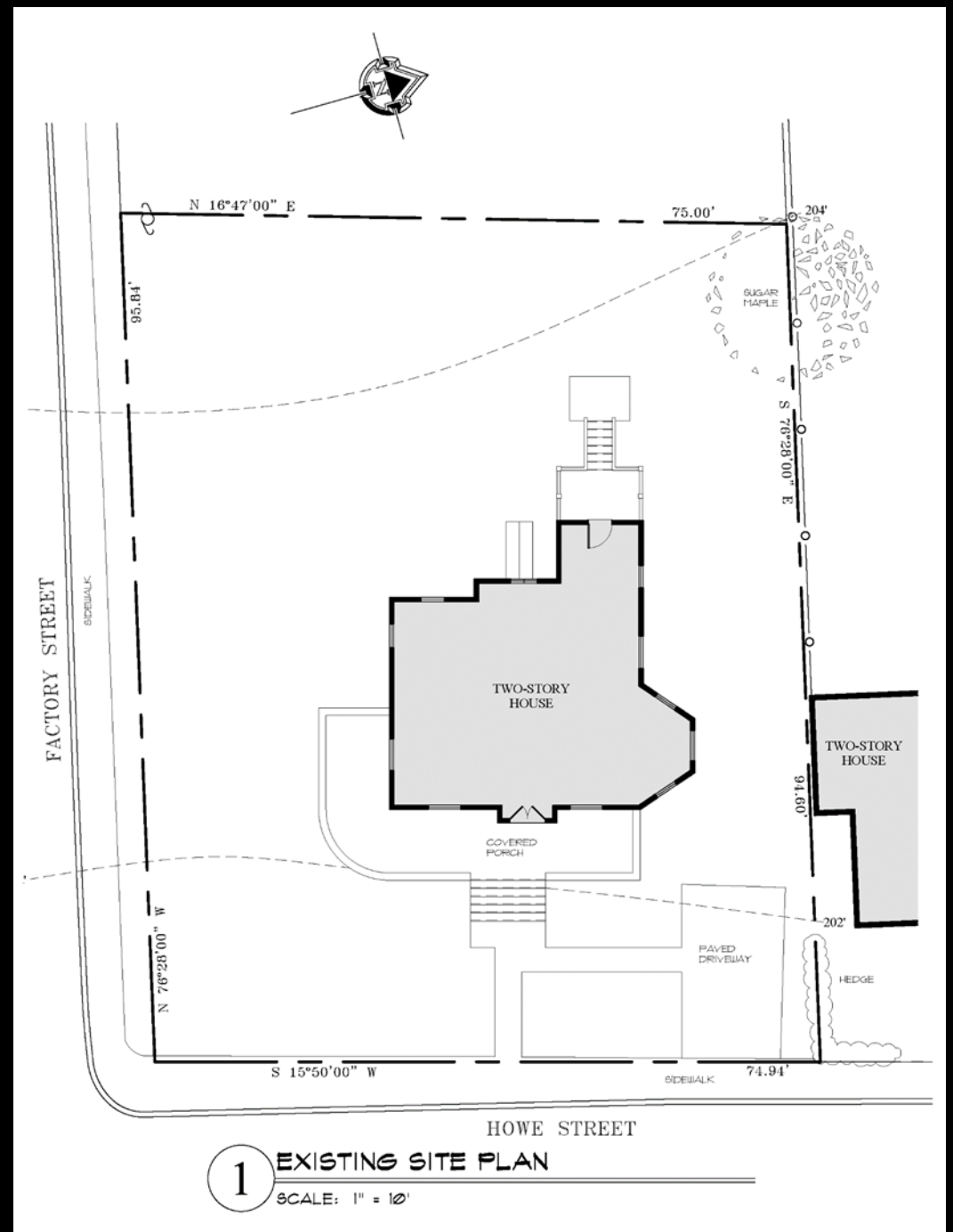
Document Existing Conditions  
(What exists now)

Explore what's possible with the site  
(Bubble Diagrams)

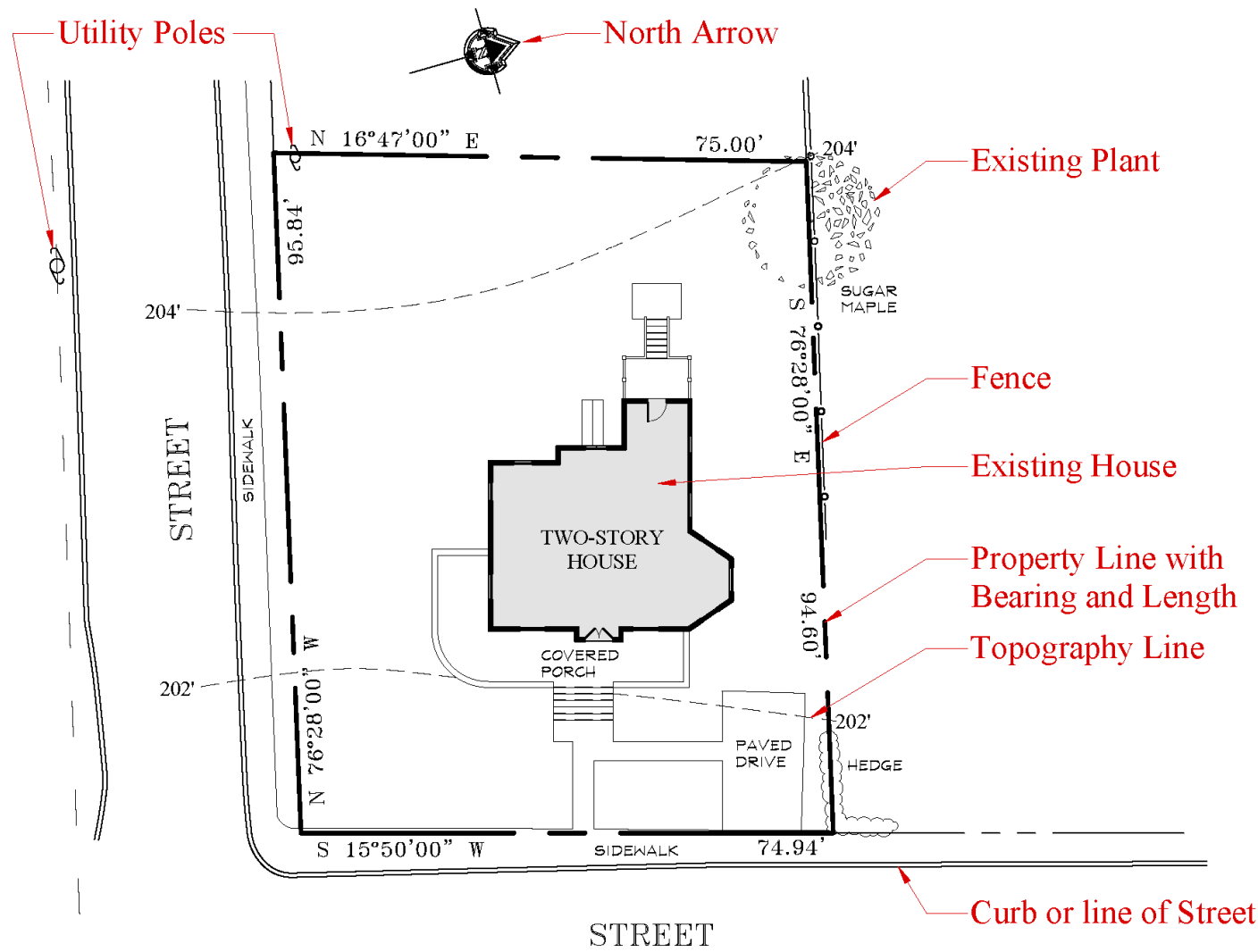
Decide on the design that fulfills the requirements best

Convert the bubbles into actual plants

# How to read a Site Plan







Drawing Number

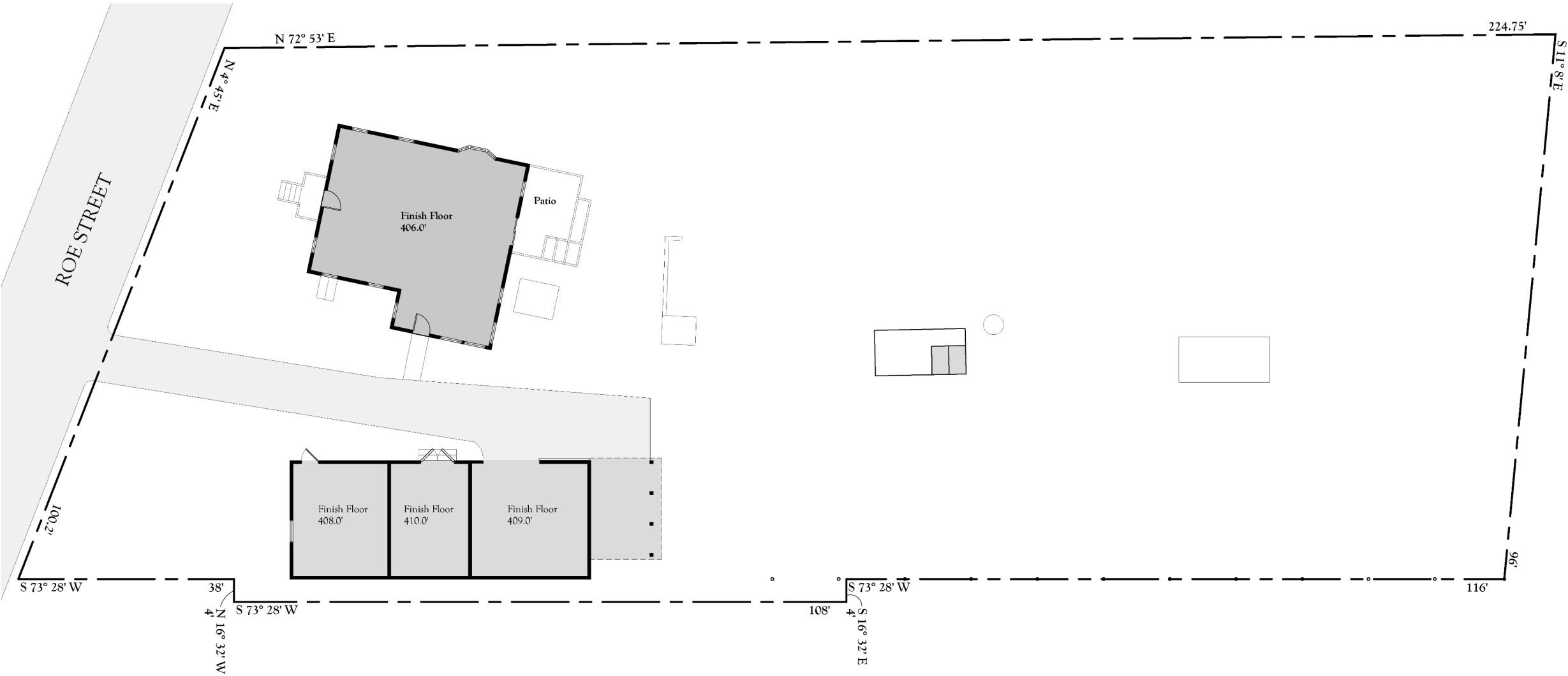
1 SITE PLAN

Drawing Name

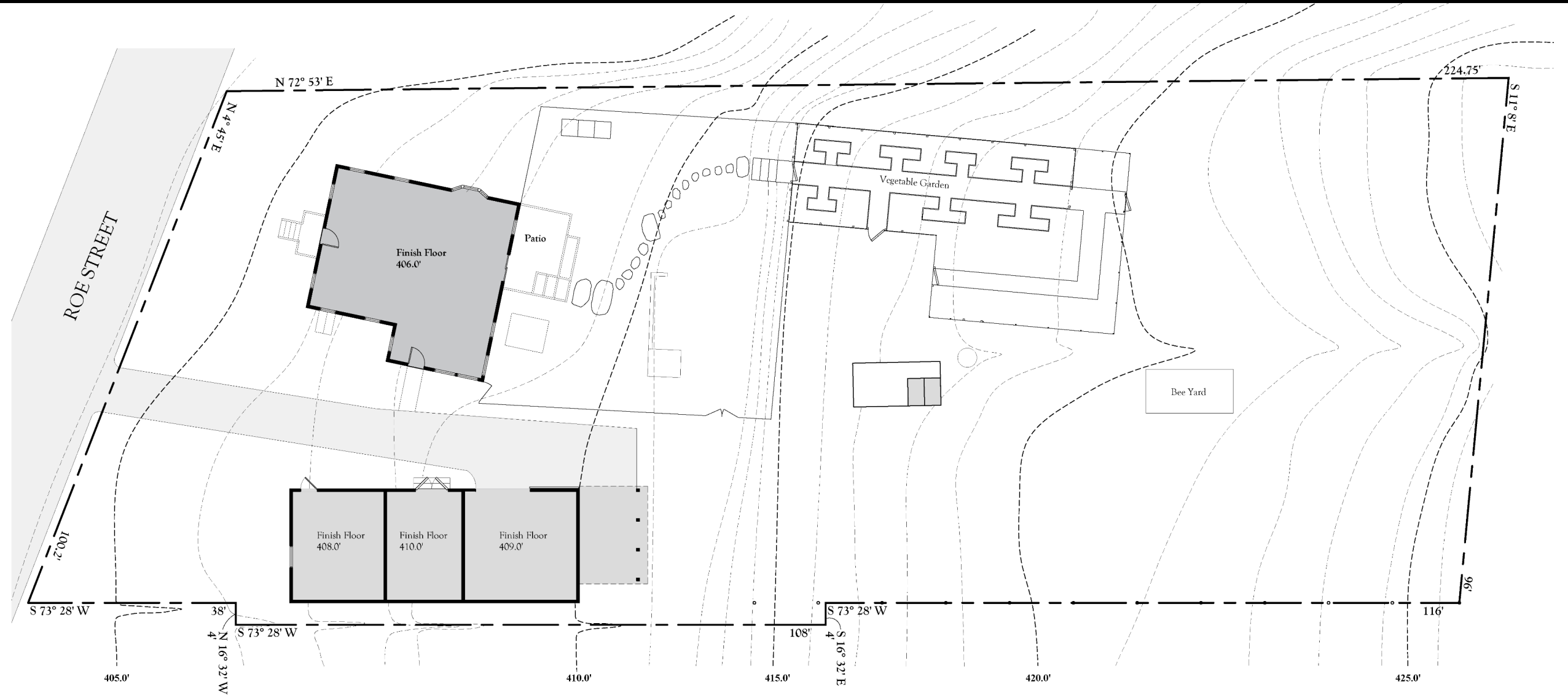
SCALE: 1" = 20'

Scale

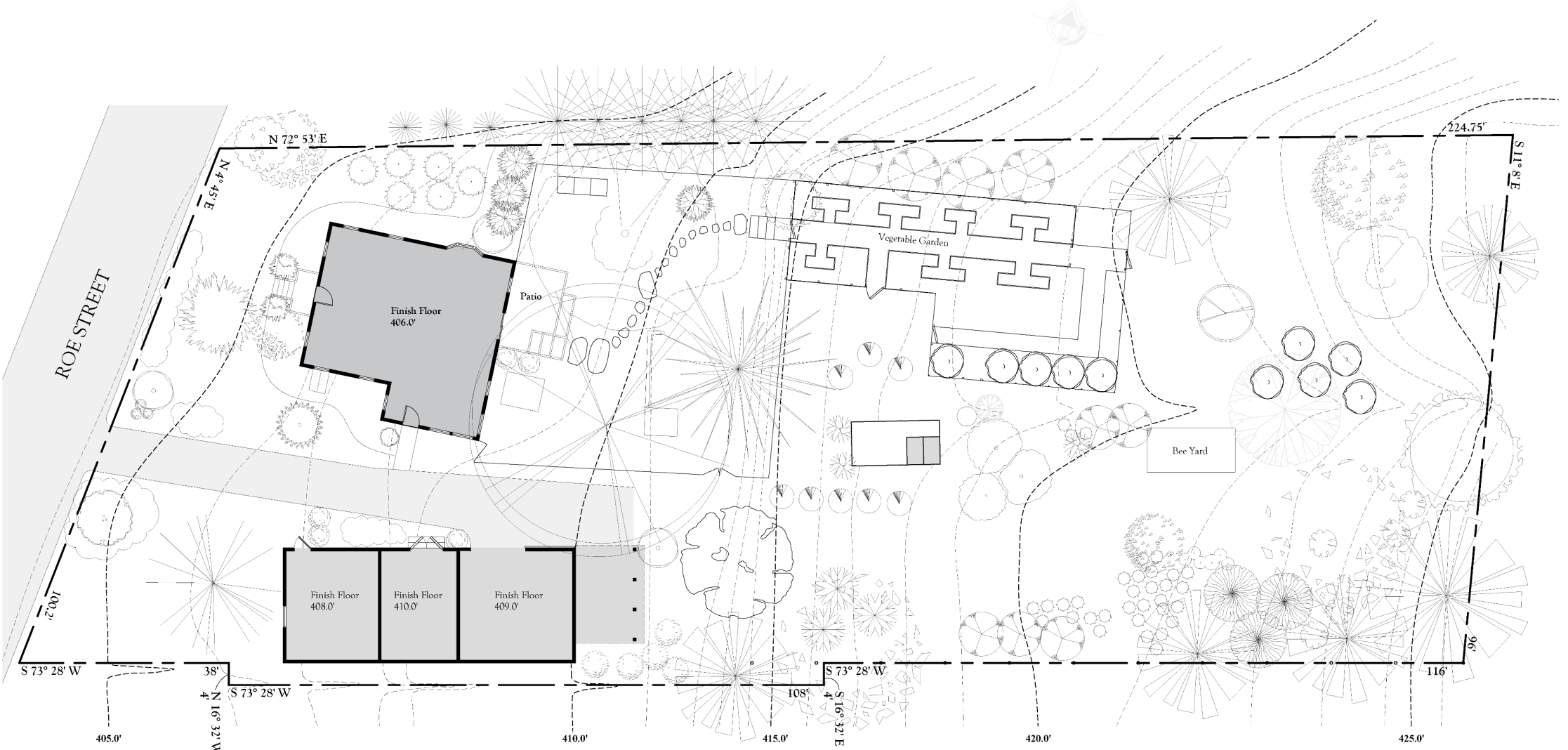
# Base Plan / Basic Survey



# Base Plan with Topography



# Existing Conditions Plan



1 EXISTING SITE PLAN  
SCALE: 1/8" = 1'-0"

## WOODY PLANT KEY

<i>Juglans nigra</i> , Black Walnut	<i>Betula papyrifera</i> , Paper Birch	<i>Juniperus virginiana</i> , Eastern Redcedar	<i>Cornus florida</i> , White Dogwood	<i>Cotoneaster</i> spp., Cotoneaster	<i>Spirea prunifolia</i> , Bridal Wreath Spirea	<i>Buxus</i> spp., Boxwood	<i>Cercis canadensis</i> , Redbud
<i>Quercus coccinea</i> , Scarlet Oak	<i>Acer saccharinum</i> , Silver Maple	<i>Pinus strobus</i> , White Pine	<i>Prunus serrulata</i> 'Kanzan', Kanzan Cherry	<i>Aronia melanocarpa</i> , Chokeberry	<i>Ilex x meserveae</i> 'Mesog', China Girl Holly	<i>Juniperus horizontalis</i> , Blue Rug Juniper	<i>Prunus virginiana</i> , Chokecherry
<i>Quercus alba</i> , White Oak	<i>Picea abies</i> , Norway Spruce	<i>Picea pungens</i> , Colorado Blue Spruce	<i>Forsythia</i> spp., Forsythia	<i>Panicum virgatum</i> , Switchgrass	<i>Viburnum</i> spp., Viburnum	<i>Ulmus americana</i> , American Elm	<i>Myrica pensylvanica</i> , Bayberry
<i>Rhus typhina</i> , Staghorn Sumac	<i>Morus rubra</i> , Mulberry	<i>Syringa vulgaris</i> , Lilac	<i>Philadelphus</i> spp., Mock-orange	<i>Betula populifolia</i> , Gray Birch	<i>Viburnum trilobum</i> , Highbush Cranberry	<i>Amelanchier arborea</i> , Downy Serviceberry	<i>Malus</i> spp., Crabapple
<i>Hibiscus syriacus</i> , Rose of Sharon				<i>Cornus racemosa</i> , Gray Dogwood			

# Field Measuring

## Tools:

Tape Measure

String

Laser

Transit

## Methods:

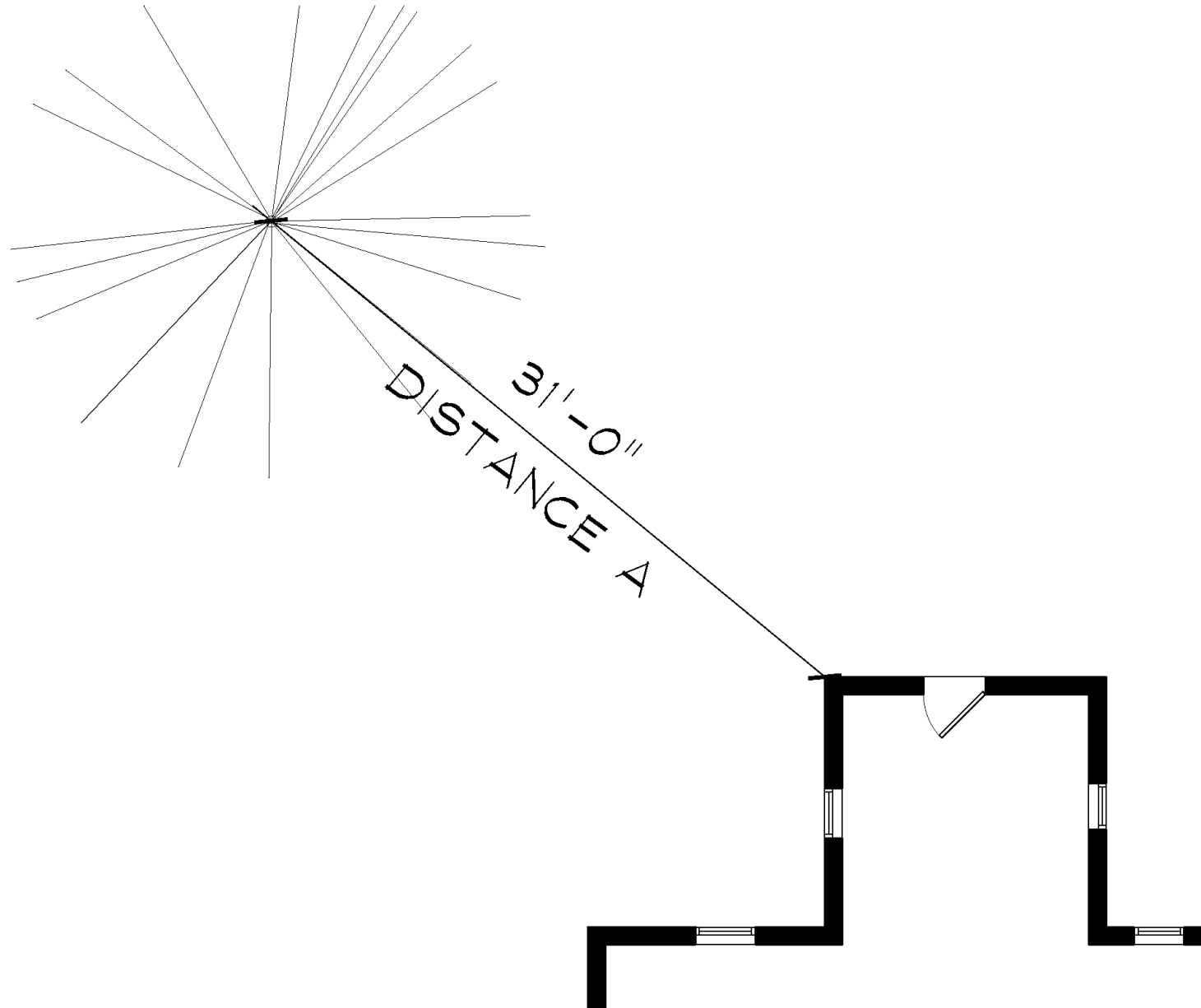
Triangulation

Alignment

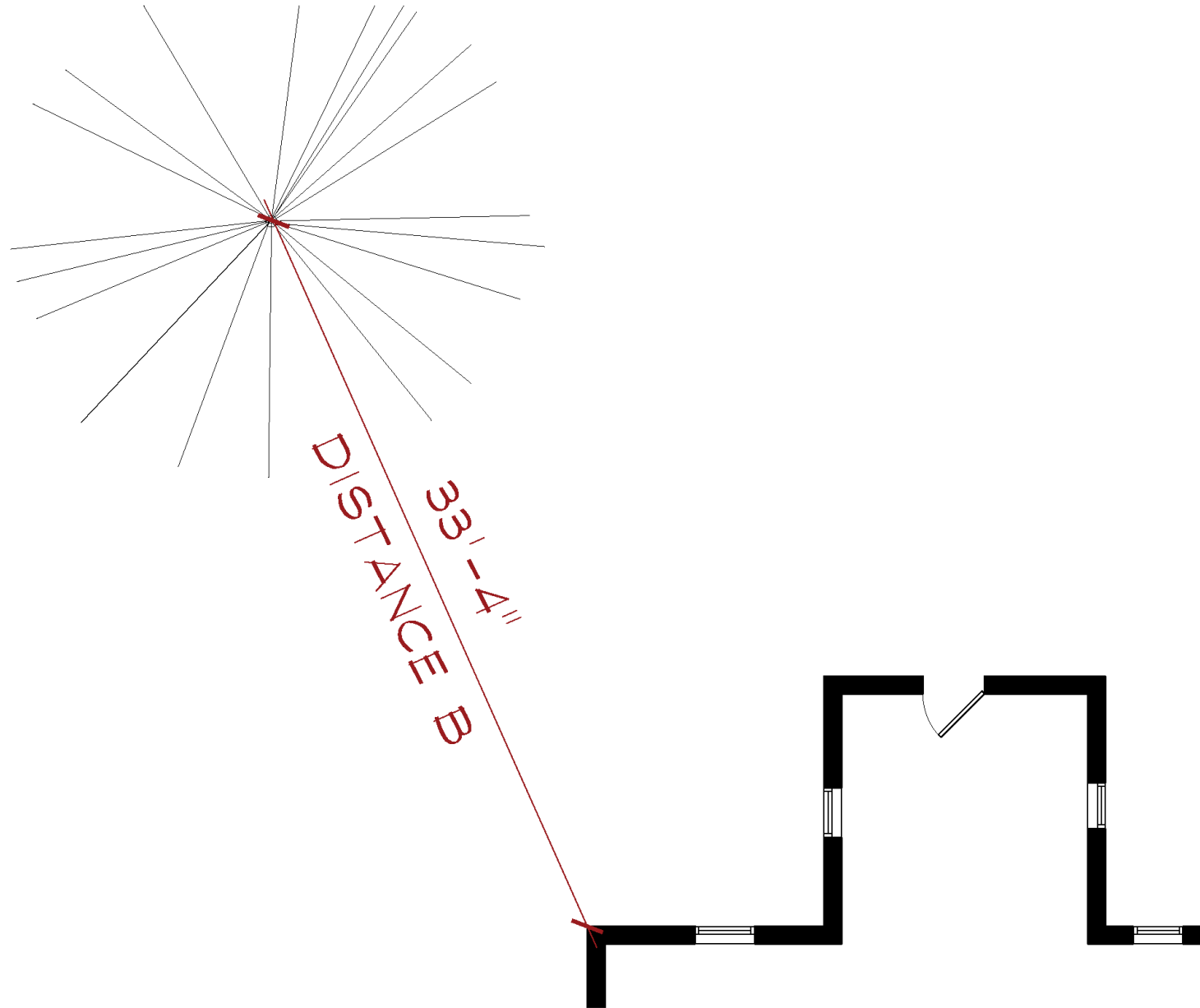
String

Vertical Measurements

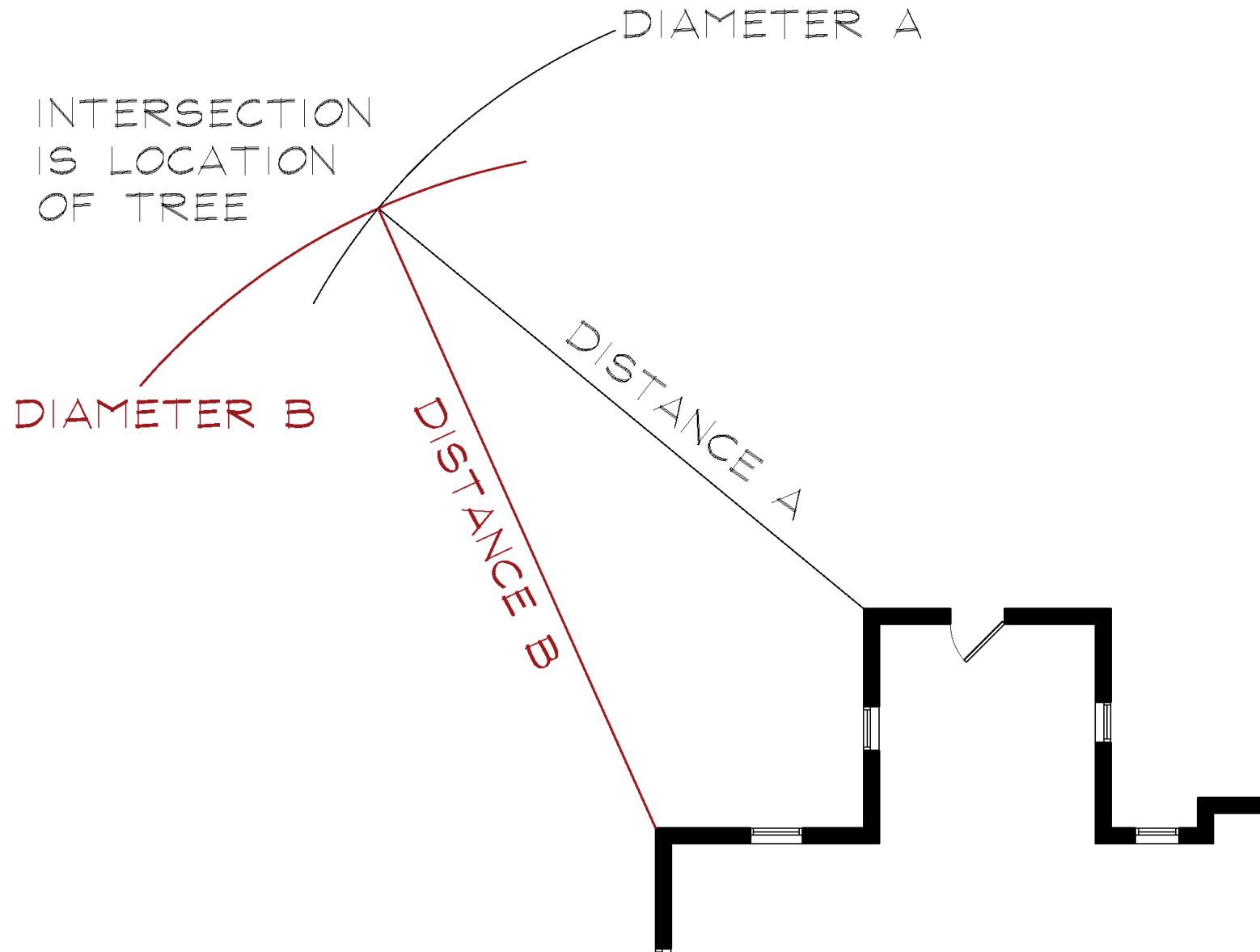
# Triangulation



# Triangulation



# Triangulation





# Site Analysis

# Site Analysis

Shade

Sun

Water/Wet spots

Soil

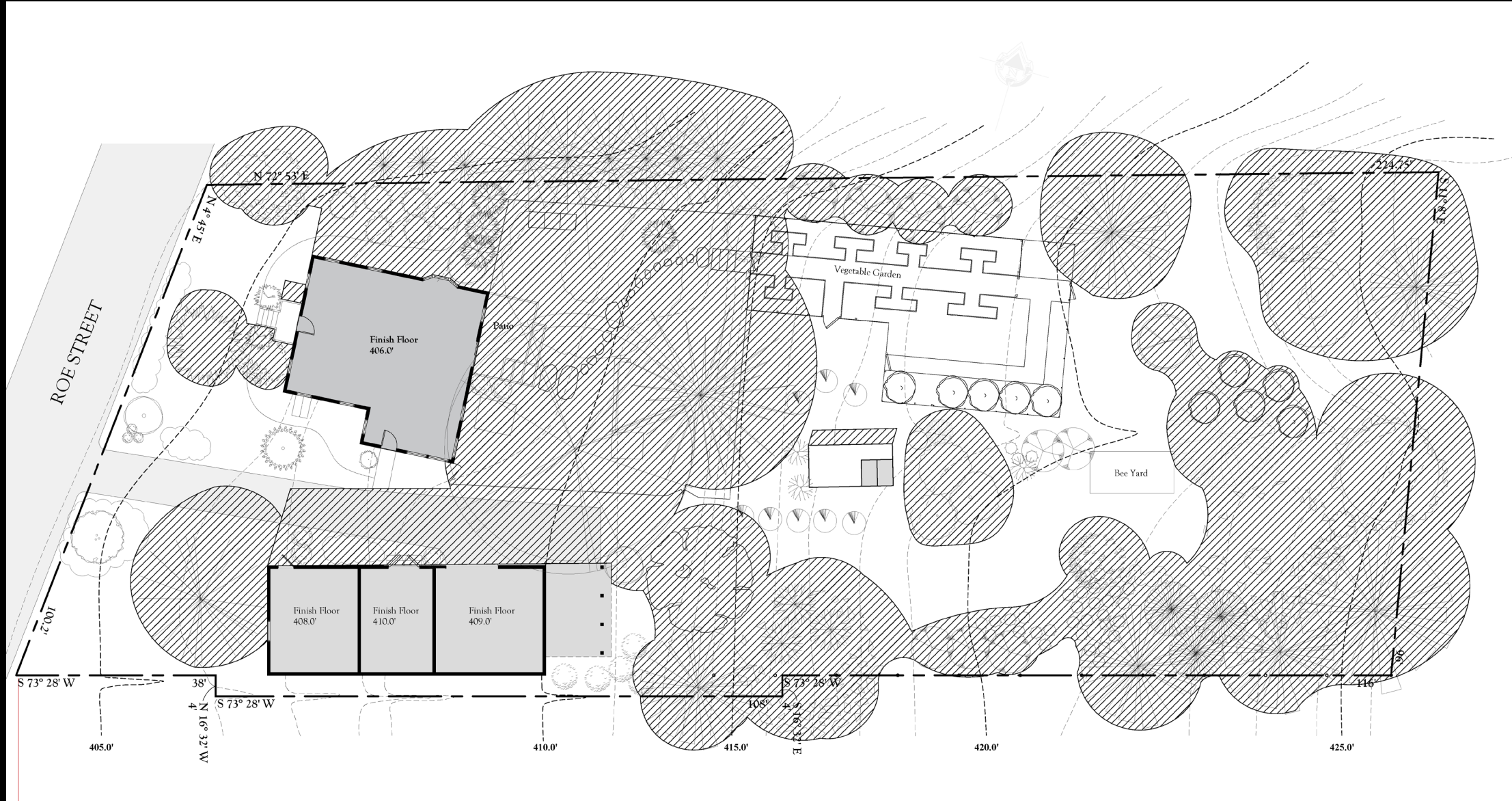
Undesirable Views

Wind

Noises

# Site Analysis

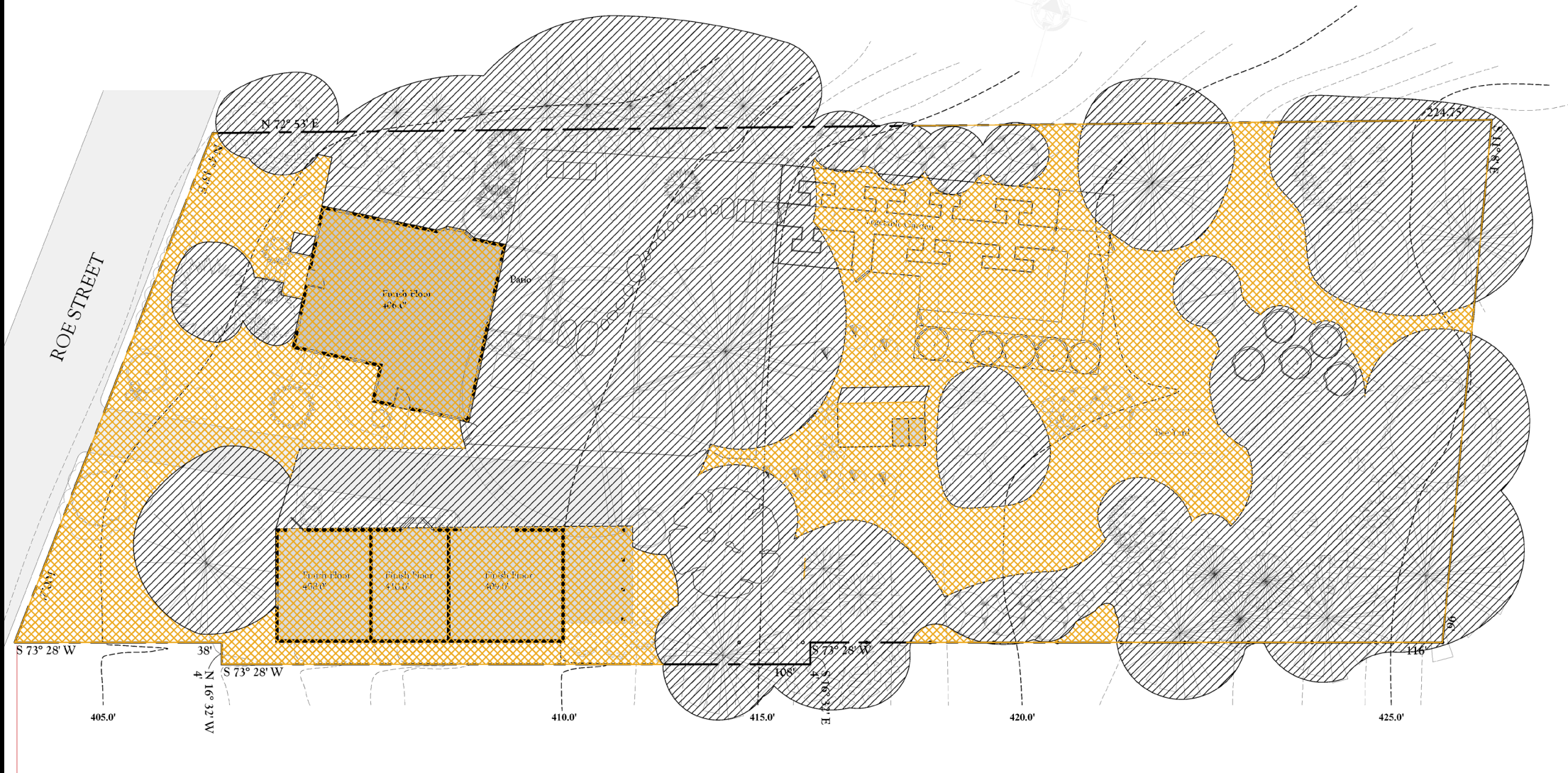
- Shade





# Site Analysis

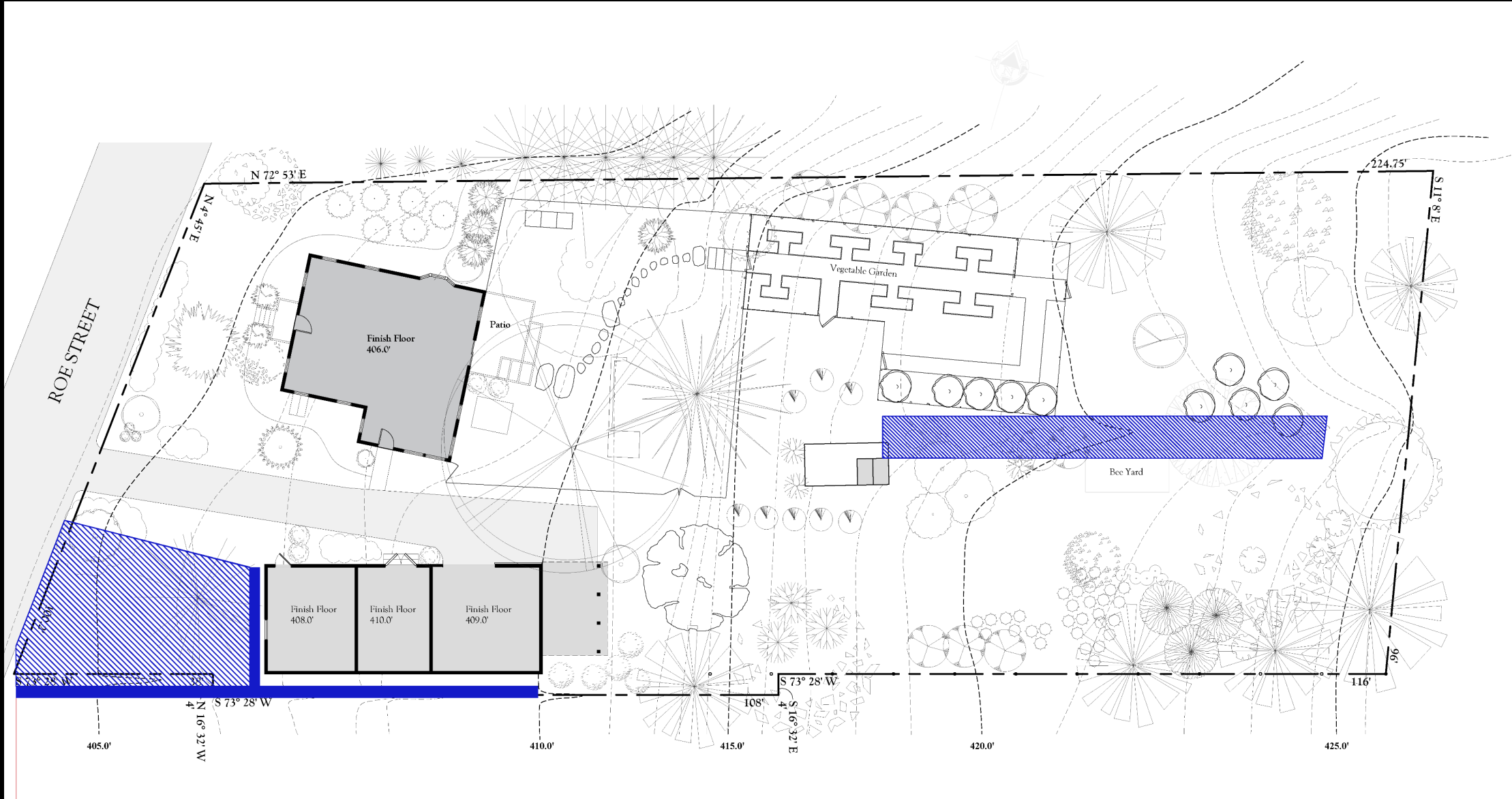
- Sun
- Shade





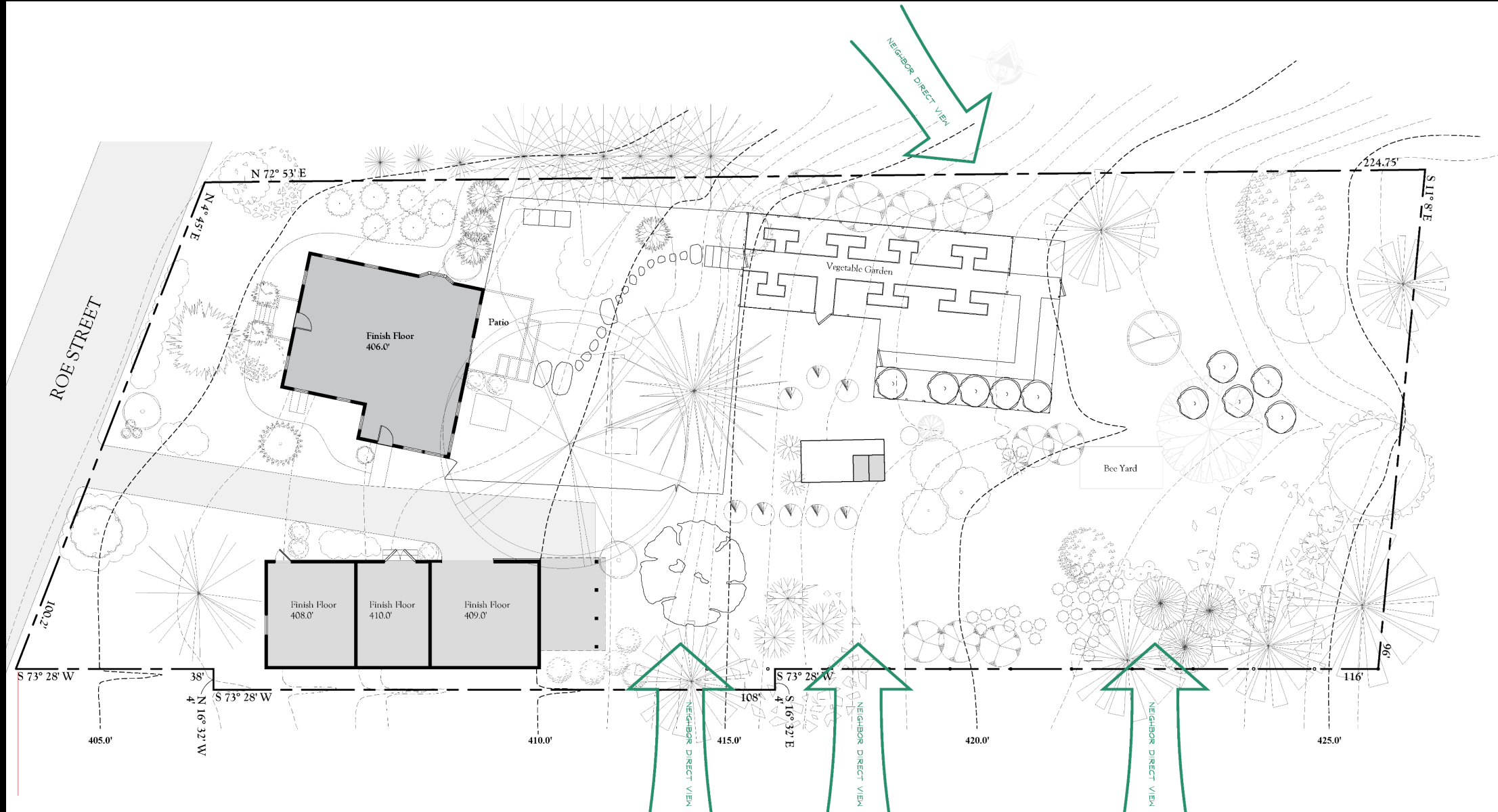
# Site Analysis

- Water



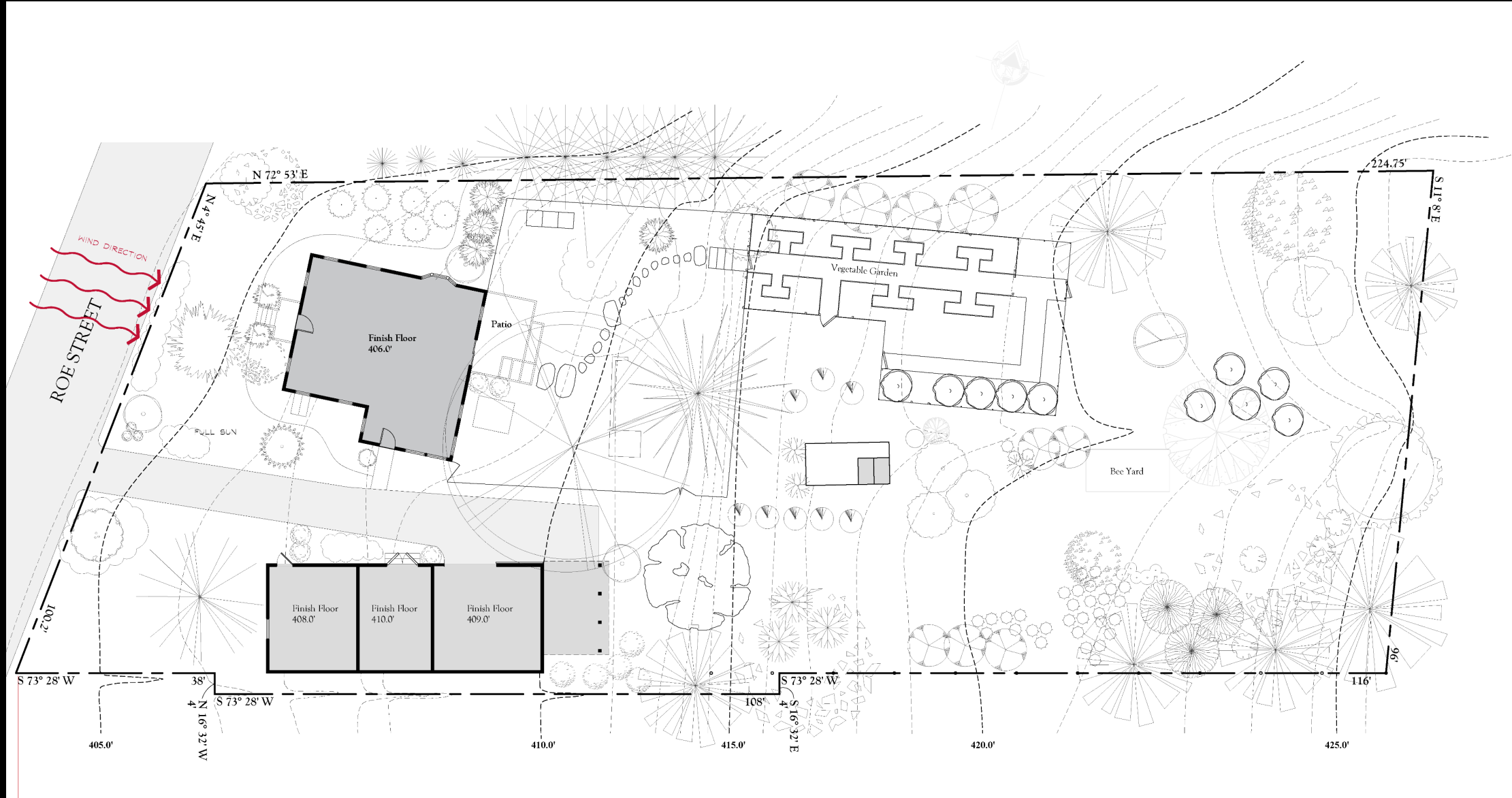
# Site Analysis

- Views from Neighbors



# Site Analysis

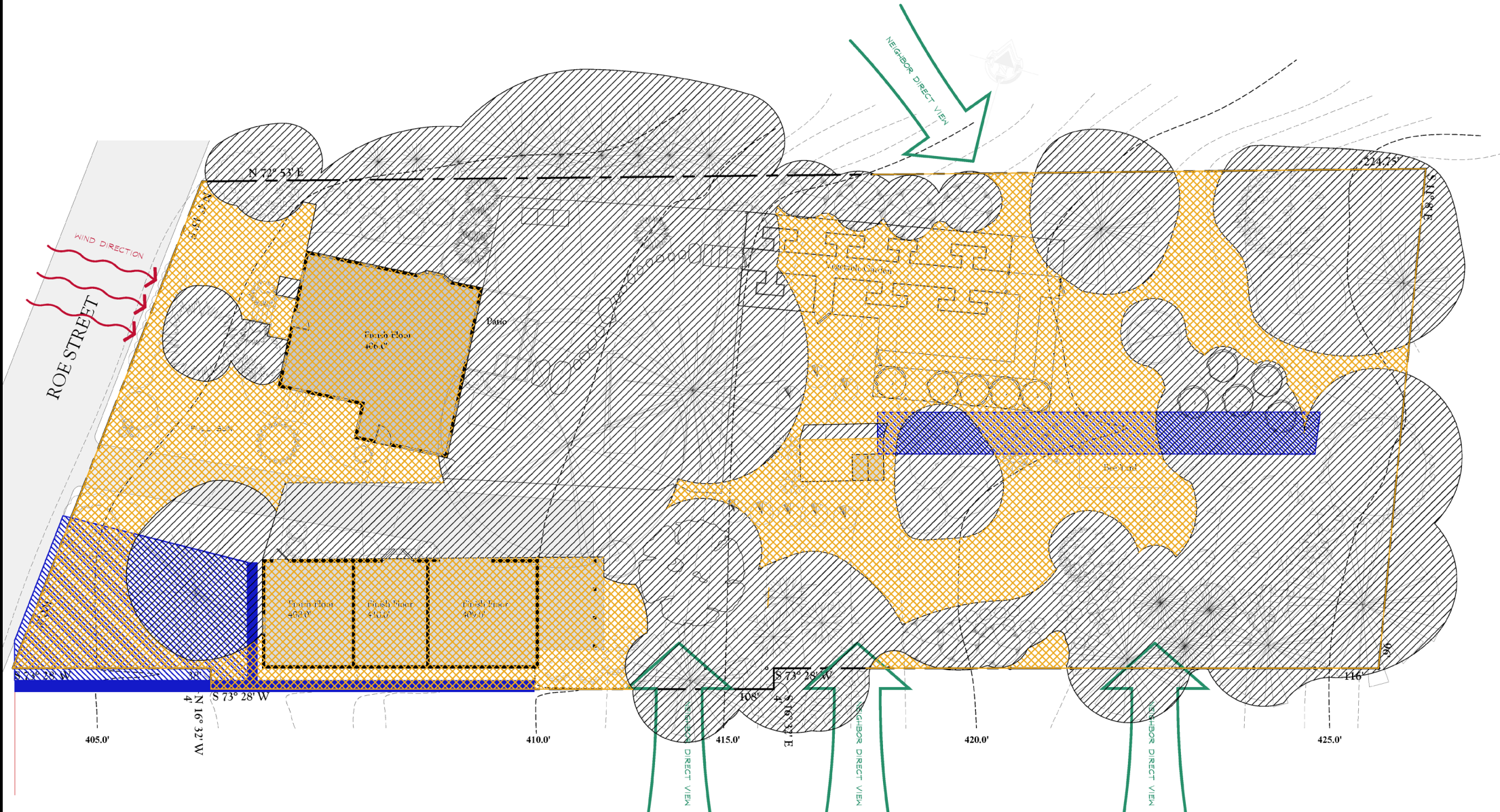
- Wind





# Site Analysis

- Sun
- Shade
- Water
- Views from Neighbors
- Wind





# Preliminary Design: Program Requirements

Permaculture / Natural / Wildlife Garden

Edible Landscape

Xeriscape

Mushroom Yard

Bee Yard

Continuous Blooms throughout 3 seasons

Increase biodiversity

Pets: Dogs, cats

Limited outdoor entertaining

Avid Gardeners

Block Views from Neighbors

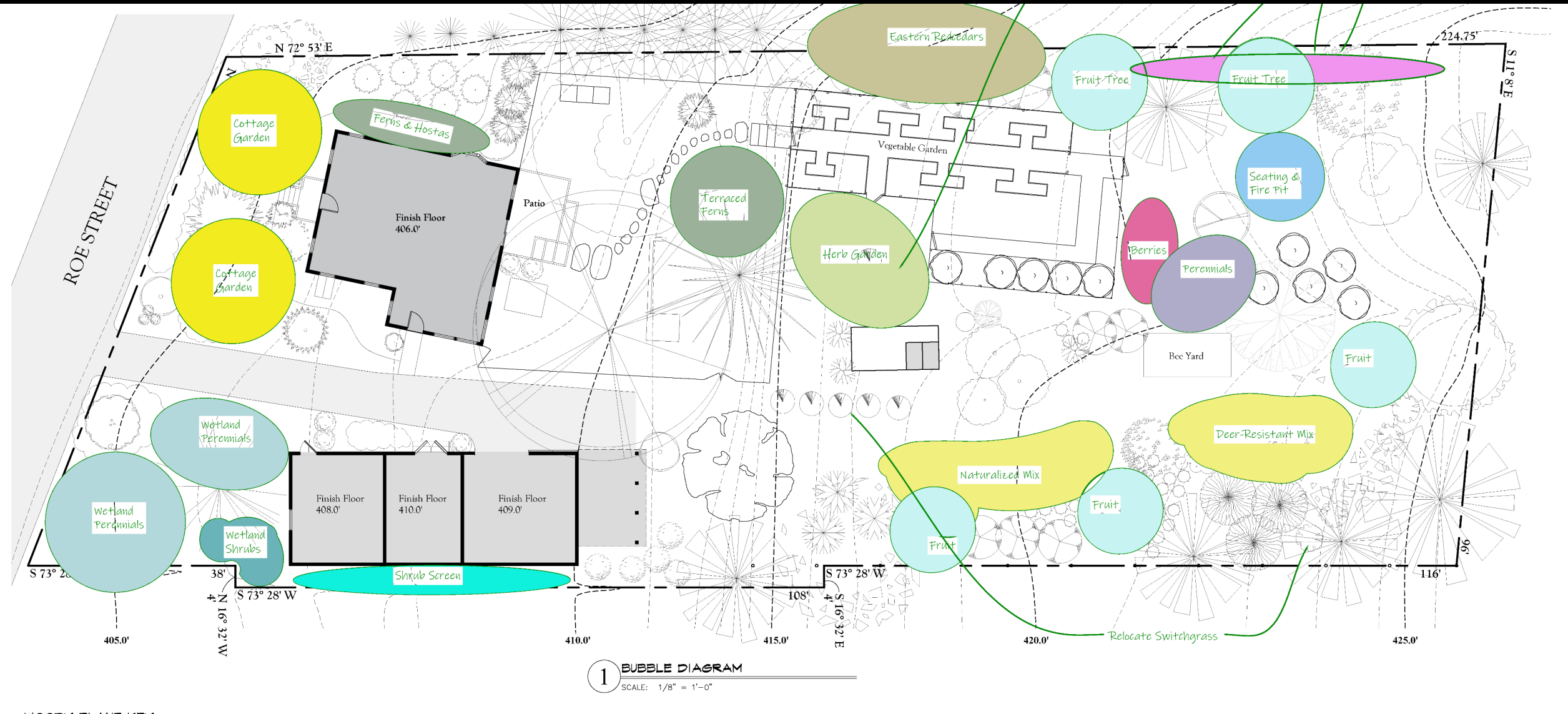
# Bubble Diagram

Program Requirements

Explore Relationships between Program parts

Try different arrangements

# Design Development: Bubble Diagram



# Planting Plan

Choose plants that satisfy both site and program requirements

Group plants

Highlight Specimen plants

Follow Design principles

# Planting Plan: Trees and Grasses



*Prunus maritima*, Beach Plum



*Alnus incana subsp. rugosa*, Speckled Alder



*Physocarpus opulifolius*, Prairie Ninebark



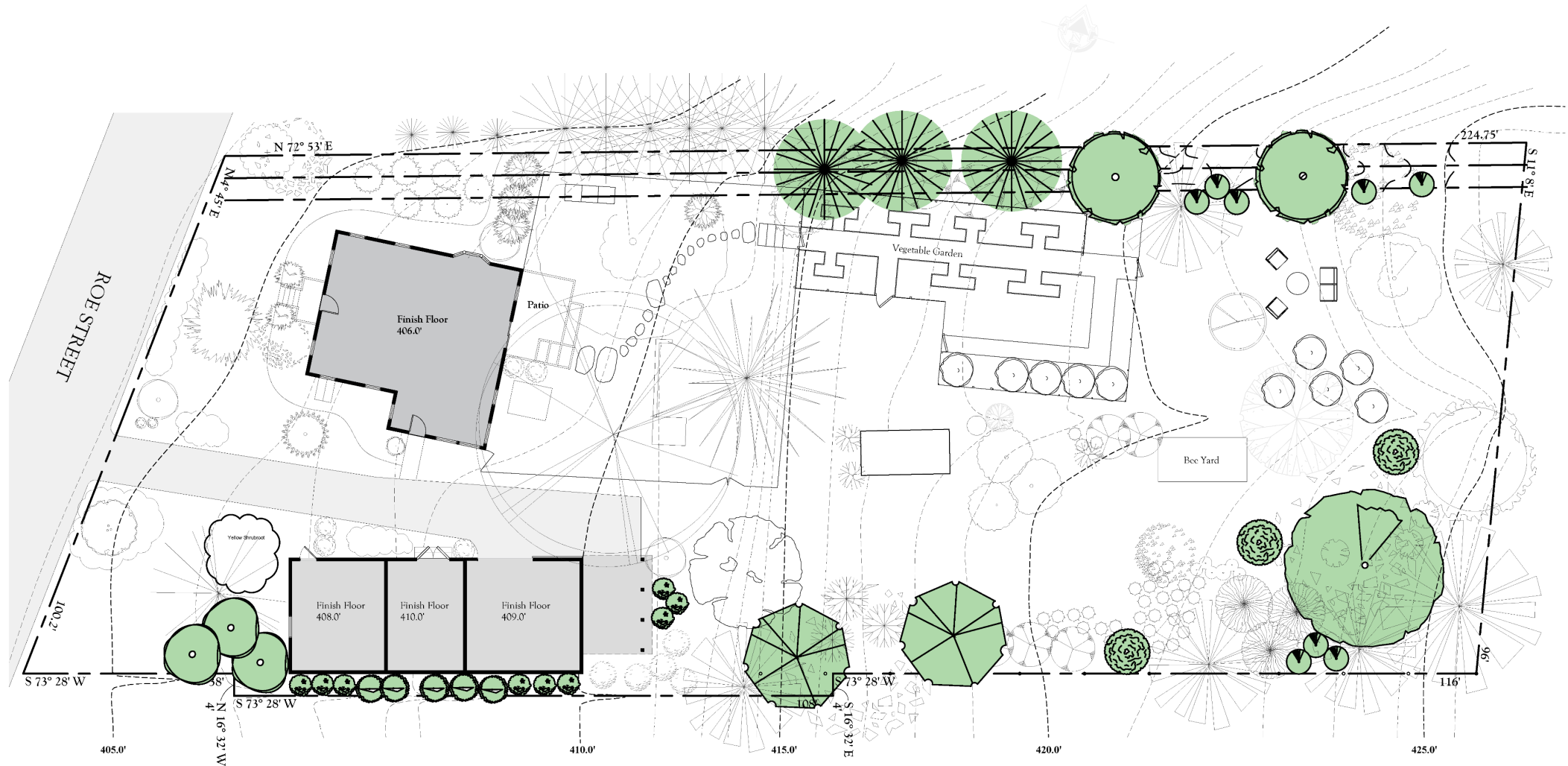
*Asimina triloba*, Common Paw Paw



*Juniperus virginiana*, Eastern Redcedar



*Ptelea trifoliata*, Wafer Ash



# Choosing Plants

Cornell Woody Plants Database

<http://woodyplants.cals.cornell.edu/home>

University of Connecticut Plant Database

<http://hort.uconn.edu/>

Grow Native Plant Picker

<https://grownative.org/native-plant-info/plant-picker/>

Audubon Native Plants Database

<https://www.audubon.org/native-plants>

USDA Plant Database

<https://plants.sc.egov.usda.gov/java/>

Lady Bird Johnson Wildflower Center

<https://www.wildflower.org/plants/>

National Wildlife Federation Native Plant Finder

<https://www.nwf.org/NativePlantFinder/About>

# Homework

Choose one scenario

Analyze the site

Explore program requirements with bubble diagrams

Try different design principles to relate the bubbles to one another

Create bubble diagram, identifying each program requirement

Extra Credit:

Develop a Planting Plan

Student Name

Scenario #

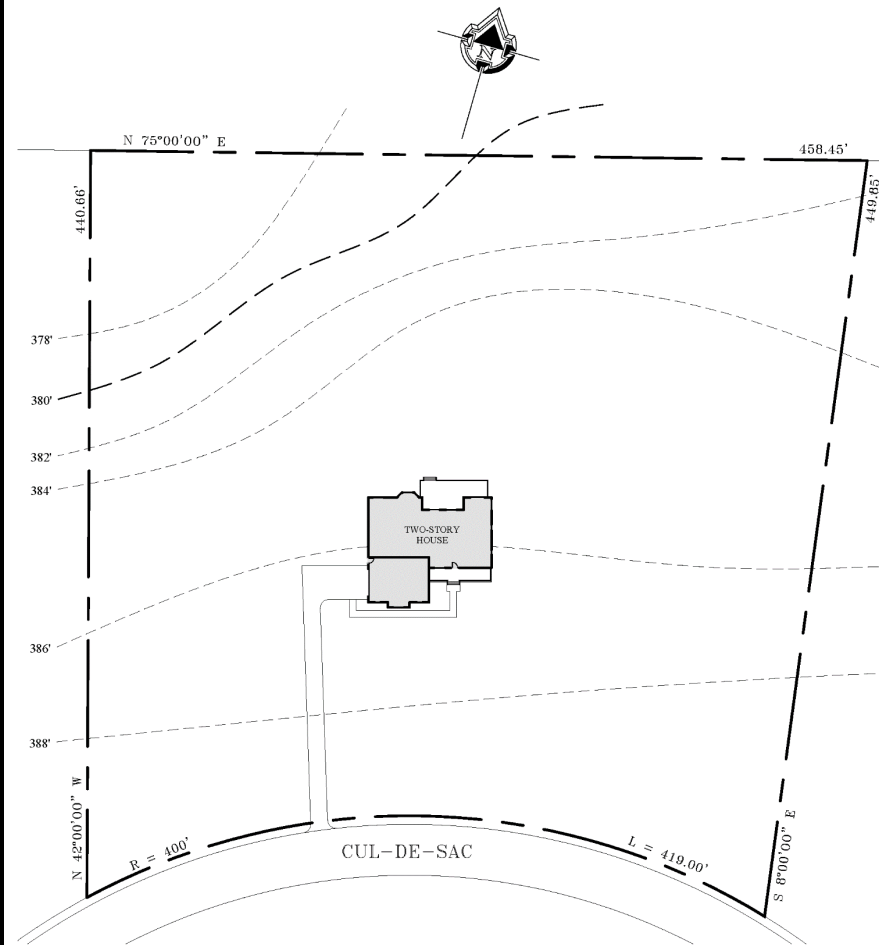
Overall Grade

<b>Site Analysis</b> (20 points possible)	
Components of analysis to be graded are ability to read a site plan (8 points), ability to understand grade/topography (7 points), understand the way the sun moves across the site (5 points)	
Total	
<b>Program Requirements</b> (20 points possible)	
Each program requirement for the Scenario chosen will count as one item to be graded i.e., if there are 5 program requirements, each item will be worth 4 points	
Total	
<b>Design Principles Used</b> (10 points possible)	
Did you use any design principles in the bubble diagram? Using any of the design principles in the moodle materials or in the handouts will result in credit. The more principles you use, the more credit you will receive	
Total	
<b>Plant Selections</b> (10 Bonus points possible)	
Bonus points for selecting plants - the only way to lose bonus points is to choose invasive plants or choose plants inappropriate to the location	
Total	
<b>Comments</b>	
An opportunity for me to point out the things I see in your design and suggest areas you may want to develop a little more	





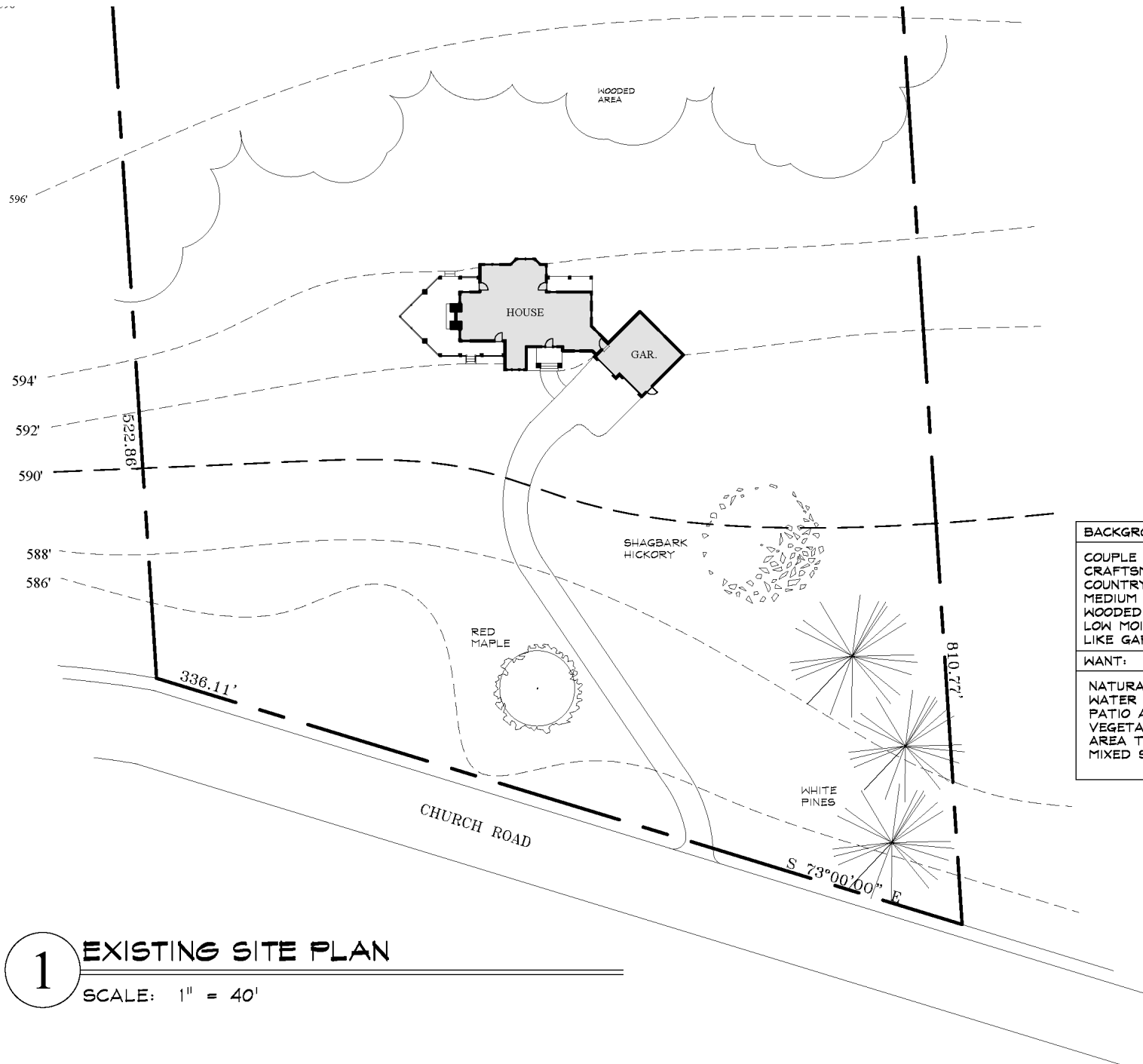




**1** EXISTING SITE PLAN  
SCALE: 1" = 50'

### SCENARIO 3

BACKGROUND:	WANT:
COUPLE IN MID-FORTIES WITH 2 YOUNG CHILDREN	PERENNIAL BEDS
SUBURBAN SETTING	MIXED SHRUB BORDERS
McMANSION TYPE HOUSE	OUTDOOR KITCHEN AND DINING AREA
HIGH INCOME, WILL HIRE A GARDENER	POOL
SUNNY	PLAY AREA FOR CHILDREN
UGLY VIEW OF NEIGHBOR'S HOUSE AND YARD	PRIVACY
	AREA FOR PETS



#### SCENARIO 4

##### BACKGROUND:

COUPLE IN MID-FIFTIES, NO CHILDREN LIVING AT HOME  
 CRAFTSMAN STYLE HOUSE  
 COUNTRY SETTING  
 MEDIUM TO HIGH INCOME  
 WOODED AREA IN BACK YARD, SHADED  
 LOW MOIST ARE IN FRONT YARD, SUNNY  
 LIKE GARDENING AND WILL SPEND WEEKENDS IN YARD

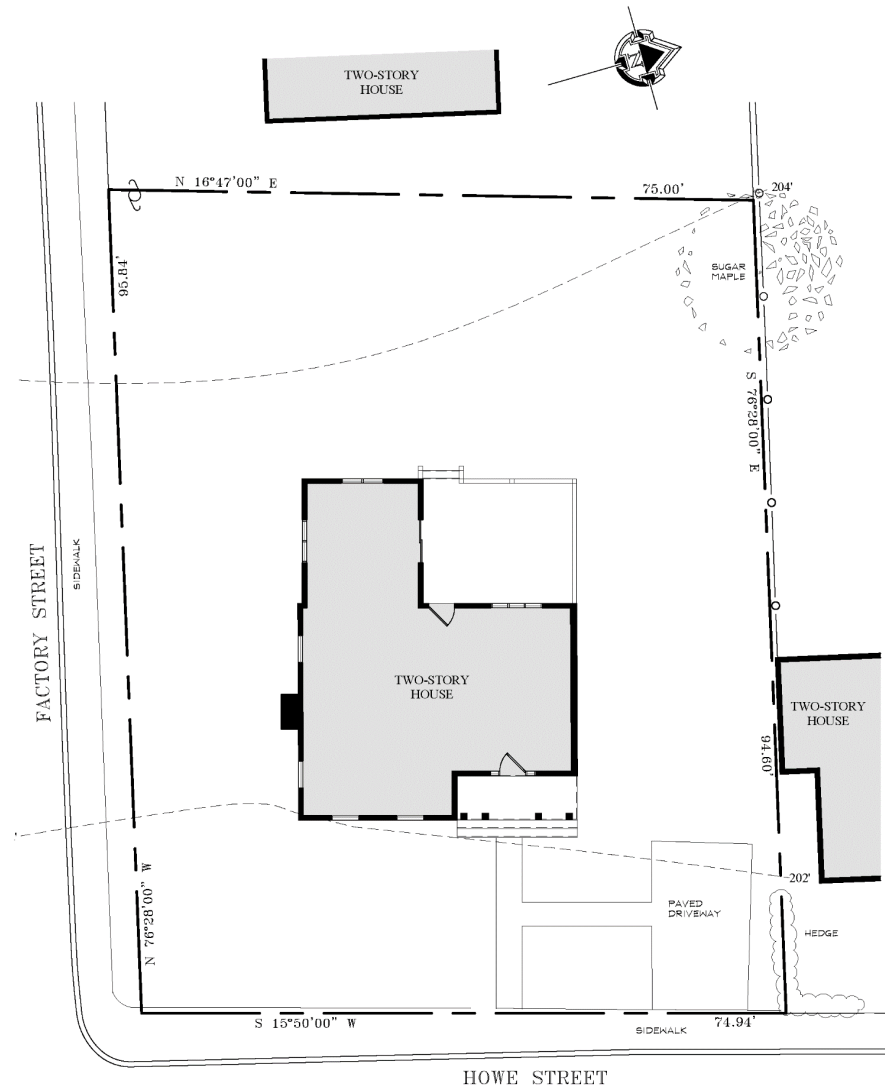
##### WANT:

NATURAL LOOK AND FEEL  
 WATER GARDEN  
 PATIO AREA FOR OUTDOOR LIVING  
 VEGETABLE GARDEN  
 AREA TO STORE WOOD FOR FIREPLACE  
 MIXED SHRUB BORDER

1

## EXISTING SITE PLAN

SCALE: 1" = 40'



# 1 EXISTING SITE PLAN

SCALE: 1" = 10'

## SCENARIO 5

BACKGROUND:	WANT:
COUPLE IN MID-SIXTIES, NO CHILDREN CITY HOUSE RELATIVELY SMALL YARD SUNNY HIGH INCOME REAR NEIGHBOR CAN LOOK DIRECTLY INTO YARD	FORMAL GARDENS ENTERTAINING AREA LOW MAINTENANCE SMALL WATER FEATURE LIKE A FOUNTAIN PRIVACY