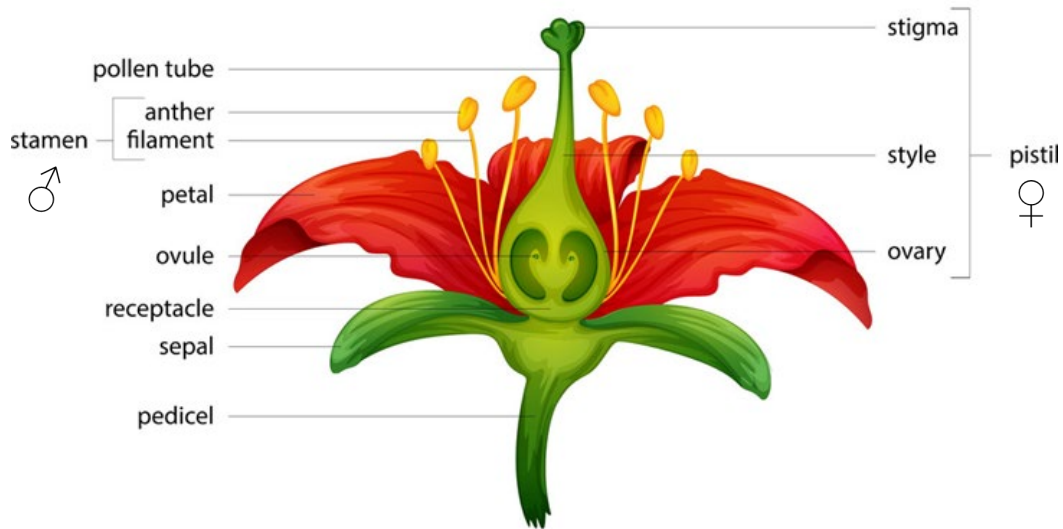


Parts of a Perfect Flower



Asexual Parts of the Flower

pedicel – the stalk of the flower

receptacle – the part of the flower stalk where the parts of the flower are attached

sepal – the outer parts of the flower (often green and leaf-like) that enclose the developing flower bud

petal – the parts of the flower that are often conspicuously colored and can be used to attract pollinators

Female Parts of a Flower – The Pistil

pistil – the ovule or egg producing part of a flower.

stigma – the sticky surface at the top of the pistil where pollen lands and germinates.

style – a tube that connects the stigma to the ovary

ovary – the enlarged basal portion of the pistil where ovules or eggs are produced, this is the part of the flower that matured into the fruit

ovule – where eggs are produced

Male Parts of a Flower

stamen - the pollen producing part of a flower, usually with a slender filament supporting the anther

anther – the part of the stamen that produces and contains the pollen grains

filament – a thin stalk that supports the anther