

More Pests to Know About

John Sanderson
Professor emeritus
Cornell University

Investigate Unexpected Mysteries



Photos: Elise Lobdell



What
caused
this
damage?



What
caused
this
damage?

Fungus
gnat
larvae

What caused this damage?



No damage yet, but this photo is a hint





Slugs and snails

eggs

- Nocturnal so usually won't be seen during daylight
- Look for slime trails
- Look for them at base of plant, around and beneath containers, beneath nearby objects



Photo: Jack Kelly Clark

Pill Bugs

- May be found hidden in moist organic matter and beneath low-growing plant parts
- Feed primarily on decaying plant material and are important decomposers of organic matter.
- Can occasionally feed on seedlings, new roots, lower leaves, and fruits or vegetables touching the soil, usually because their normal food and moisture has run out.



Photo: Arthur L. Antonelli

Sow Bugs

Millipedes

- Feed on decaying matter or dead plants.
- Only if their primary food source has run out will they move on to your living plants as a food source. **If the soil dries out, they can eat roots to get the moisture they require to survive**, so they can be destructive as they will also eat seeds and younger seedlings.



Springtails



- **Springtails** are tiny, jumping arthropods often found in damp environments
- Generally considered **harmless scavengers**.
- **Extremely common in moist soils**
- **Potential Plant Damage:** Although **rare**, certain species of springtails can damage **young seedlings and plants**. They may feed on roots and leaves, causing wilting, stunted growth, and even death in vulnerable plants.



Caterpillars



Saltmarsh
caterpillar
and damage



Saltmarsh caterpillar and damage



Saltmarsh caterpillars



Yellow Bear caterpillar



Photos: Elise Lobdell

Diamondback Moth caterpillar

Only infest cruciferous plants: kale, broccoli, cauliflower, brus. sprouts

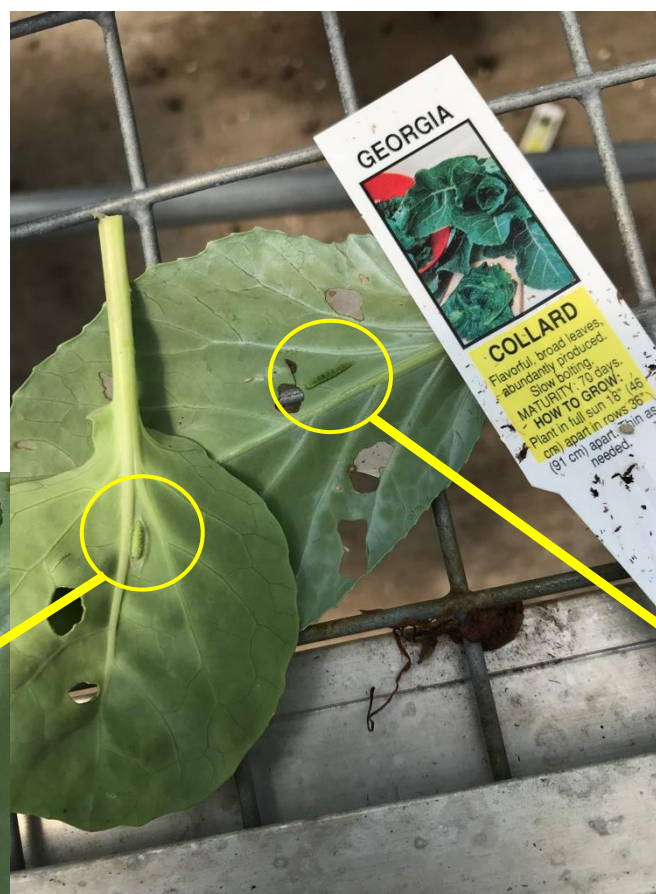


Photo: Elise Lobdell

European pepper moth (EPM)
Duponchelia fovealis



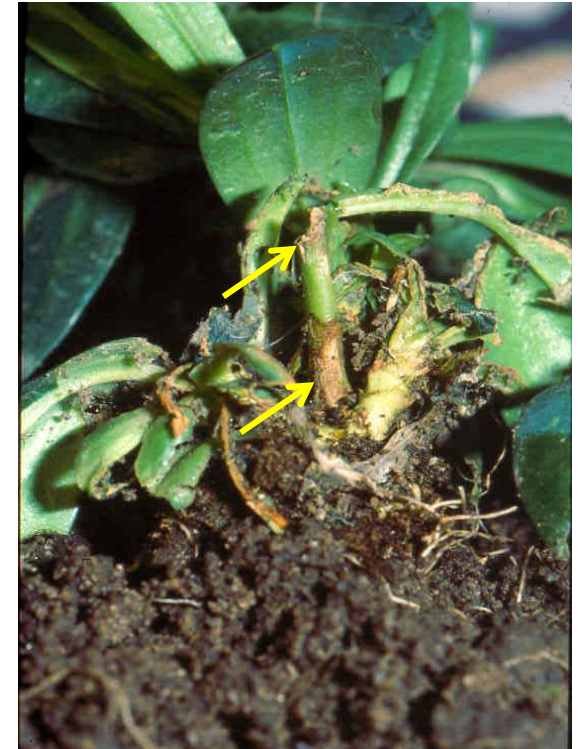
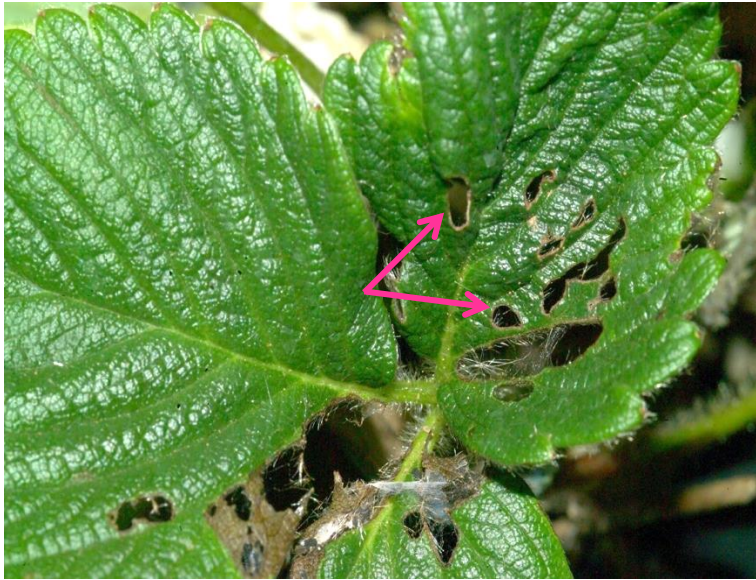
European pepper moth (EPM)

Duponchelia fovealis

- If left uncontrolled, EPM is capable of causing significant damage
- Lives quite well on dead organic matter in or on the soil, but can girdle or tunnel into stems, feed on lower leaves, or up into flowers and fruit
- Host range: begonia, gerbera, cyclamen, anthurium, kalanchoe, poinsettia, rose, and many others



Damage



Duponchelia fovealis



Damage to
begonia



Photos: Dr. Gerben Messelink, Wageningen, The Netherlands



Crown damage and webbing on Kalanchoe

Photo J. Bethke, Univ of Calif. Extension

Inspection

Pull the plant out of the container to look for silk tunnels between the soil and side of container



Image credits:

Lyle Buss, Department of Entomology and Nematology, University of Florida



European pepper moth
(EPM)

*Note its distinctive
upturned abdomen*

European corn borer (ECB)



European Corn Borers



Migrate during mid to late summer

Chrysanthemum, Dahlia, Heliopsis, Leucanthemum, Persicaria





ECB damage



D. Gilrein

ECB damage to dahlia



Florida Fern Caterpillar



damage



Florida fern caterpillars are exceedingly variable. They range from green to green with spots and lines to almost solid black with a narrow white line down each side and across the face.

Photo by J. R. Baker



5438981

Florida fern caterpillars on Boston fern.

Photo by Chazz Hesselein, Alabama Cooperative Extension System, Bugwood.org

Serpentine Leafminer

Liriomyza trifolii



Leaf stippling
(punctures)
made by
female
leafminers



L. Pundt

Liriomyza leafminers



Black and yellow body

Large black ovipositor (for egg-laying)

Blotch Leafminers



09/03/2011 08:48

Serpentine mines



Blotch mines



Leafhoppers



Common floral crop hosts:
Alcea, Astilbe, Baptisa, Dahlia,
Hibiscus, Lavandula, Lupinus, Nepeta





se Lobdell

Mint leafhopper



L. Pundt, UConn

TheSpruce

Hopperburn on alfalfa



L. Pundt, UConn



Hopperburn on raspberries

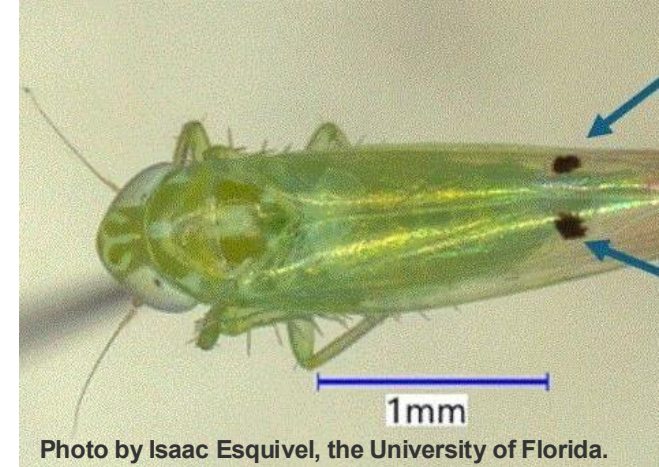
extension.umd.edu



TheSpruce

Two-spotted cotton leafhopper, *Amrasca biguttula*

- Native to Asia
- First U.S. detection on cotton in FL
- Rapidly expanding across the southern U.S.
- Broad range of ornamental and agricultural host plants
- Similar in size to potato leafhopper but with 2 dark spots on wings
- Found on leaf undersurfaces
- Yellow sticky cards for adults, leaf inspections for nymphs



Some other hoppers



Sharpshooter



Spittlebug nymph



Golden tortoise beetle larva



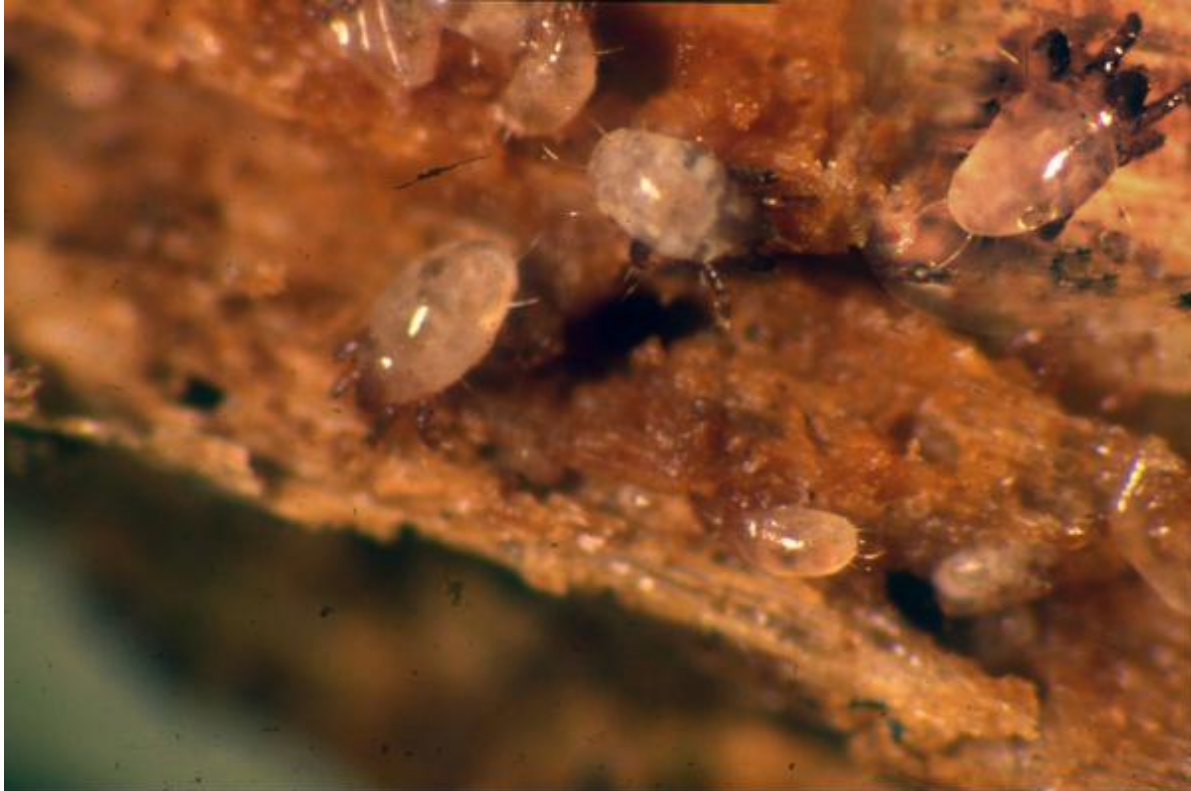
Golden tortoise beetle adult



Common on sweetpotato vine,
morning glory

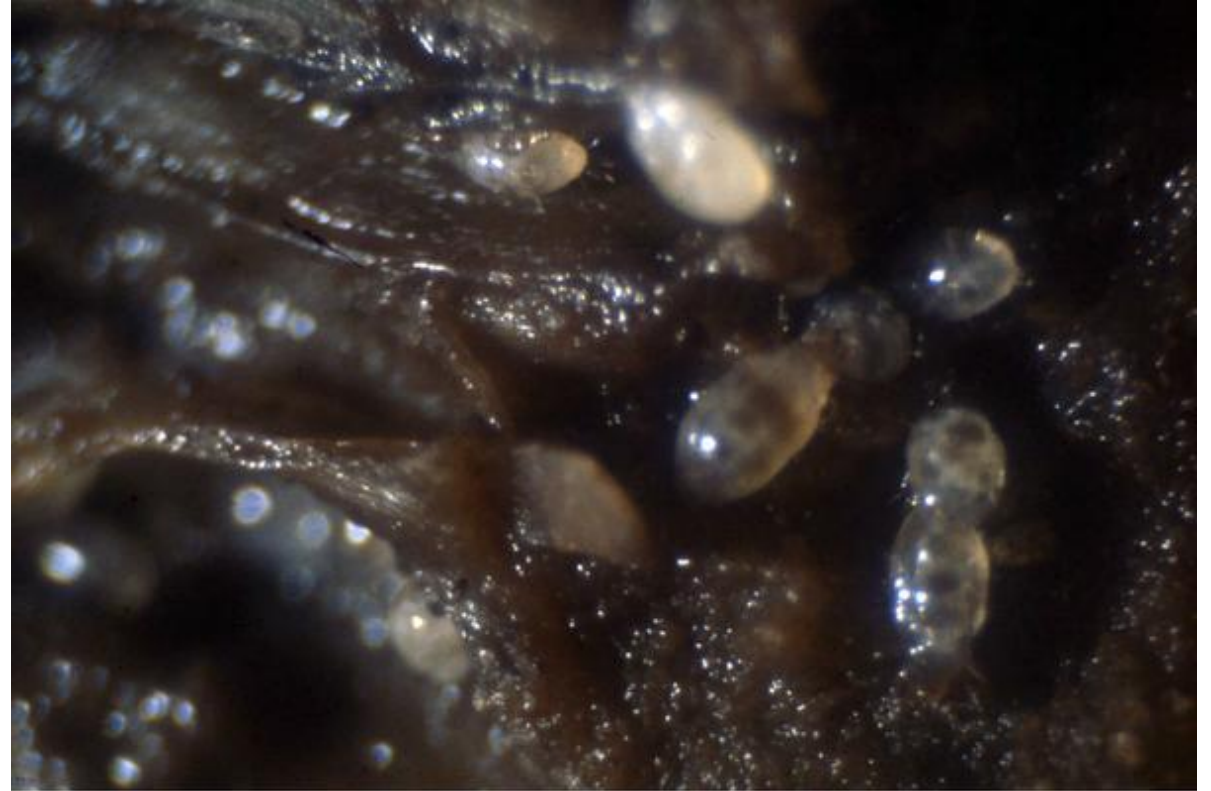
Bulb Mites

- Mite feeding damage plus fungi can destroy a bulb
- Only a problem for bulb crops



Bulb mites in an infested Easter lily stem.

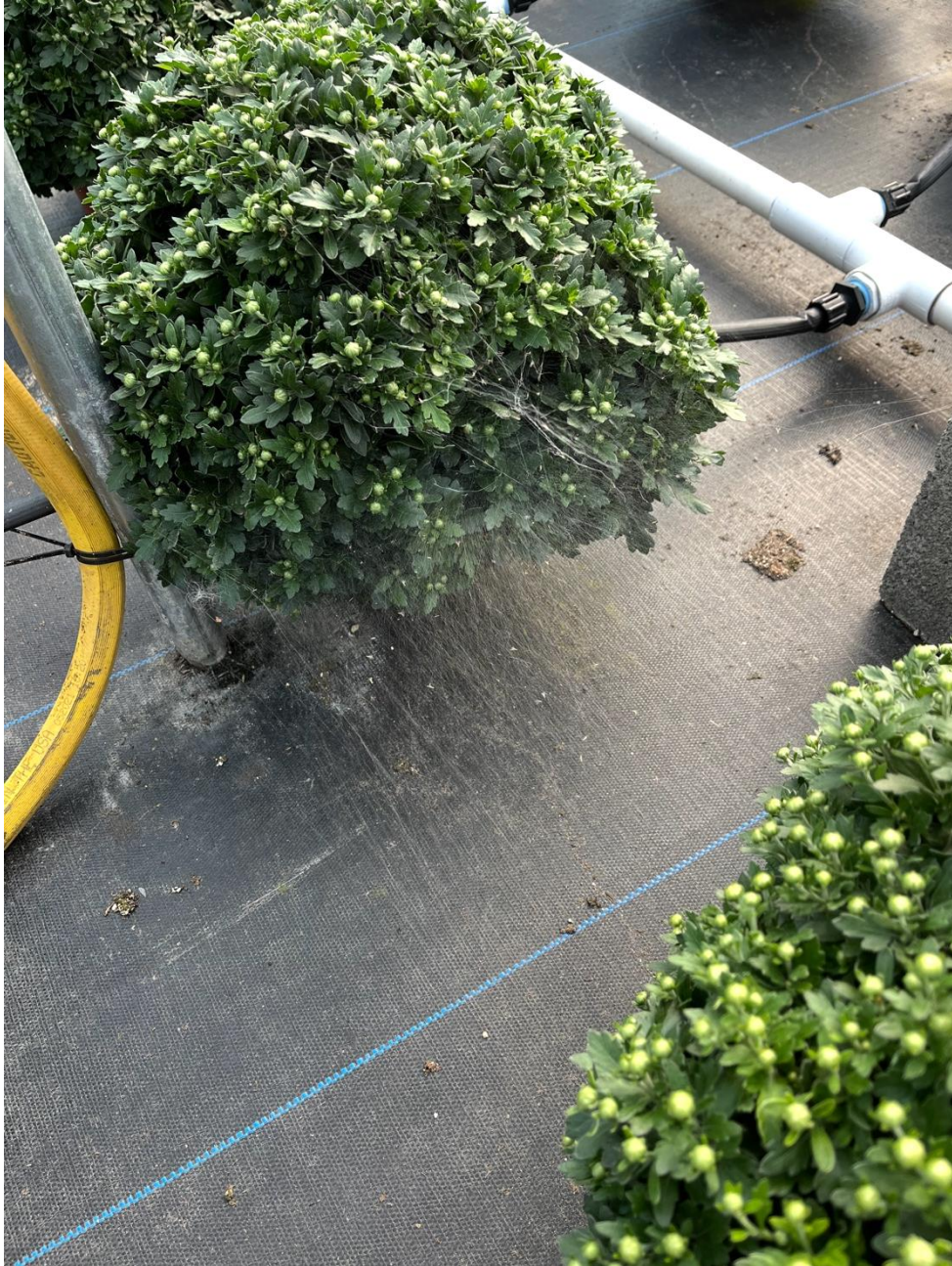
Photo by J. R. Baker, NC State University



Bulb mites in an infested narcissus bulb.

Photo by J. R. Baker, NC State University

Spider webbing

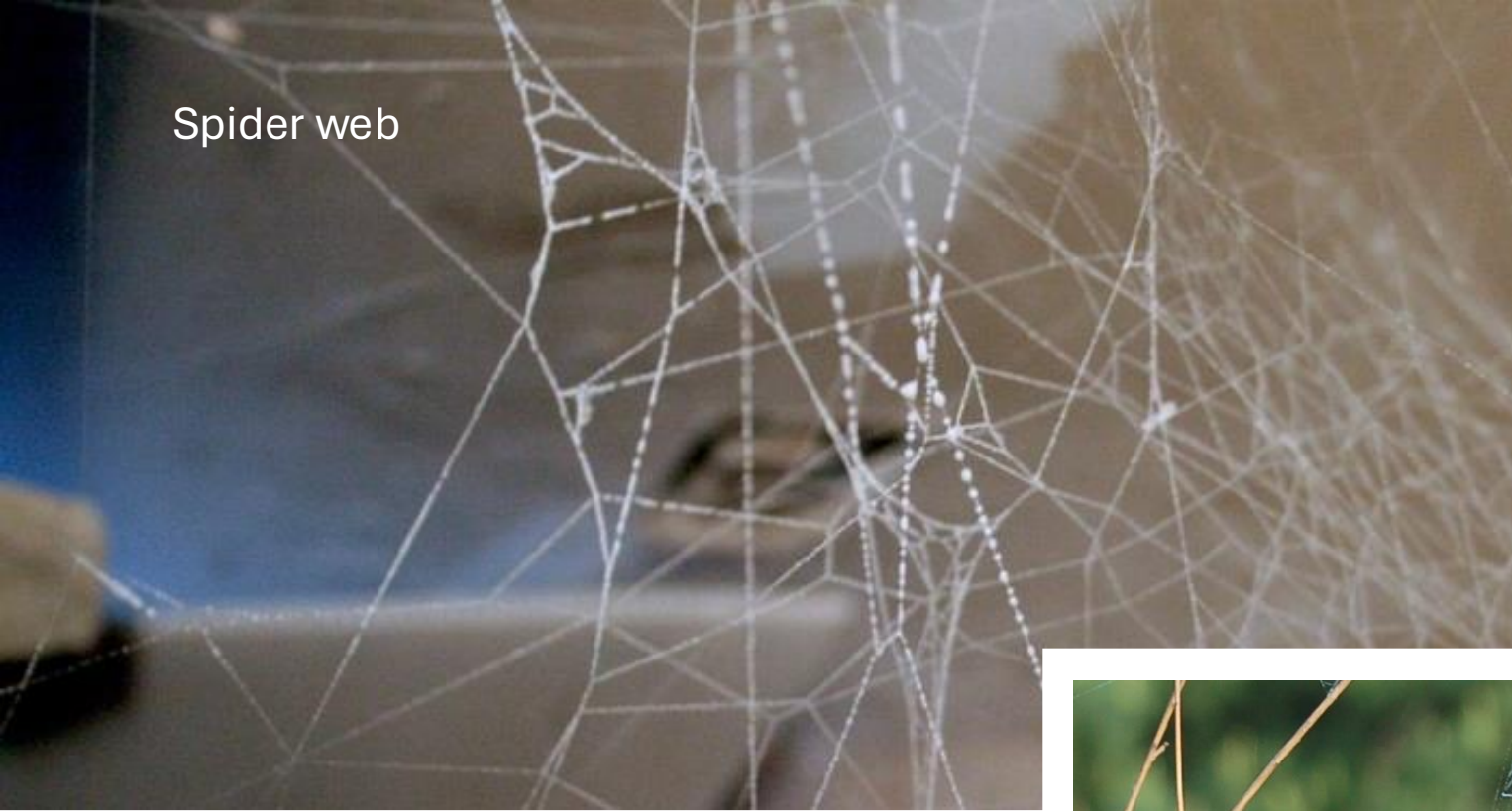


Spider mite webbing



Elise Lobdell

Spider web



Spider web

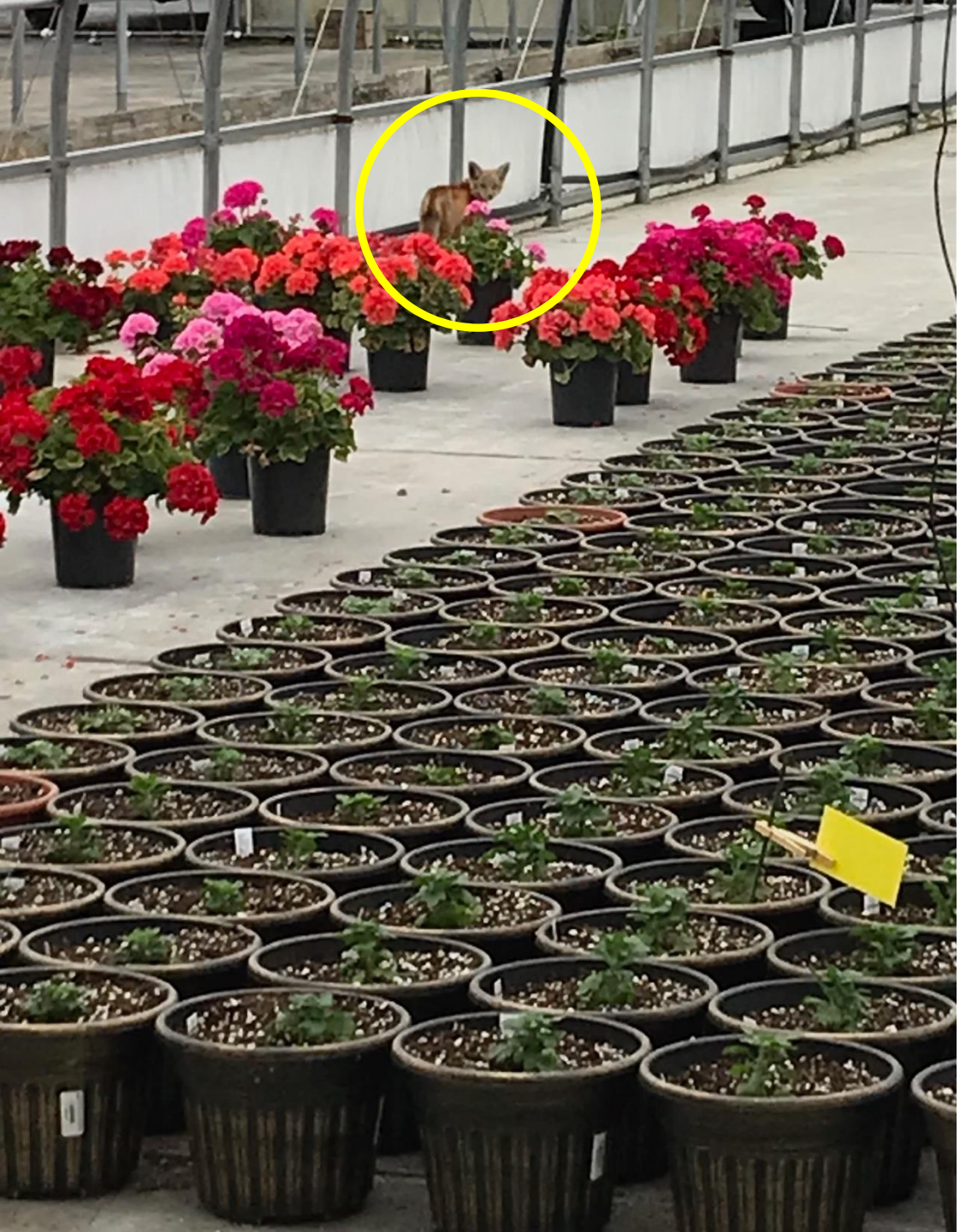


Spider Mite Webbing



Spider web









Who knows what else you might find while scouting?

Photos: Elise Lobdell