



# Botrytis and Rusts

Margery Daughtrey  
Cornell University

# Botrytis blight



Ubiquitous & Wide host range:  
*Botrytis cinerea*. Geraniums, poinsettias, snapdragons and lisianthus are especially susceptible.

There are other *Botrytis* species specific to tulips, peonies, lilies as well

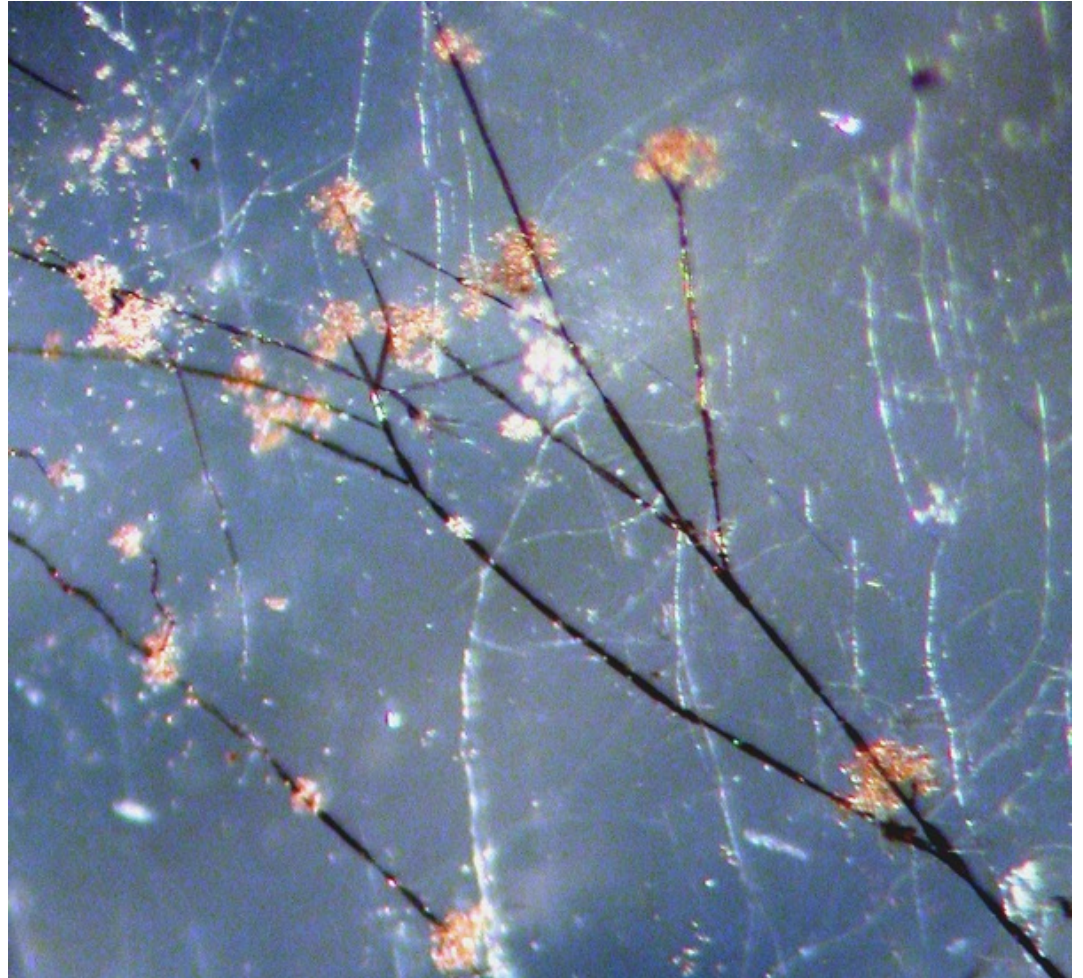


# *Botrytis cinerea*

*“garden variety”*

***Botrytis cinerea* produces  
conidia  
on dark conidiophores  
in clusters**

**Known as “Gray mold”**





Flower Lover



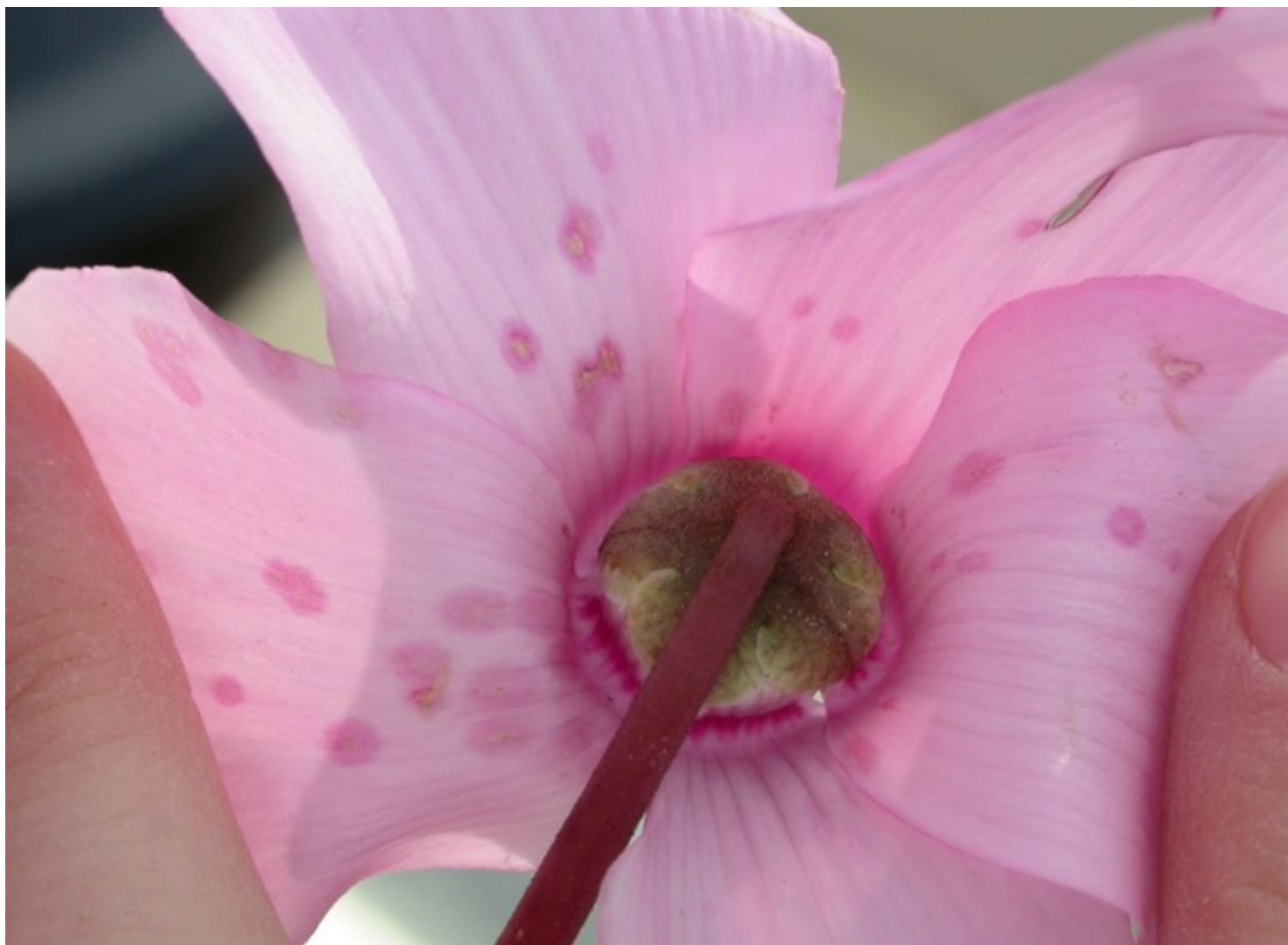


## Petal and flower blights

















Leaves



Protected with fungicide





Botrytis  
Gray mold



Think leaf  
wetness  
avoidance



Zonate Spots





Under canopy



Gray mold is confirmation of infection











New Guinea impatiens





lisianthus





Poinsettia bract



Ornamental cabbage

# Botrytis

begonia



Zonate lesions





pansy



Petal Tissue Gets It Started, Often







Zinnia

Botrytis  
blight



# Rosemary Botrytis blight

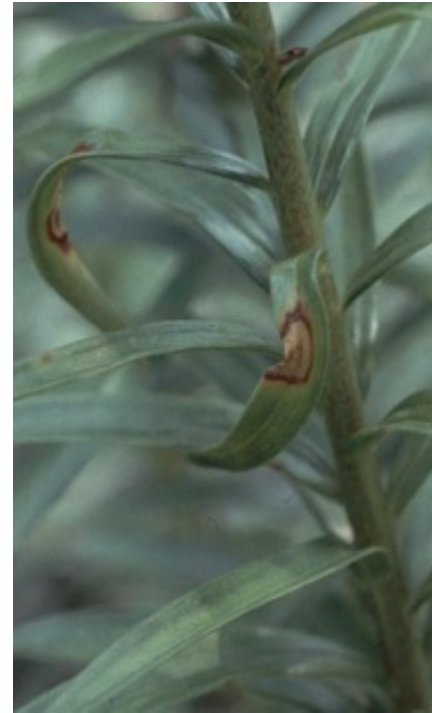






Injury, not Botrytis spots





**Botrytis leaf spots on lily**



sclerotia





**BOTRYTIS SCLEROTIA ON TULIP**

Stem  
infections by  
Botrytis





Snapdragon Botrytis canker



Cankers





Botrytis canker on lisianthus



“Gray mold”







# Rusts



**Like Botrytis, rust spores need wet leaf surface to germinate**

**Colorful spores produced in pustules on underside of leaves**



Geranium Rust – *Puccinia pelargonii-zonalis*



# Fuchsia Rust







Chrysanthemum brown rust  
*Puccinia chrysanthemi*

## Rust Diseases

Rusts tend to be host specific; e.g., mum rust won't affect snapdragon, and vice versa



Snapdragon rust







**Chrysanthemum brown rust**  
*Puccinia chrysanthemi*  
On mum and *Tanacetum*





Chrysanthemum  
White Rust  
(*Puccinia horiana*)

If you see these symptoms,  
please report to a state hort  
inspector – it is under  
a federal quarantine





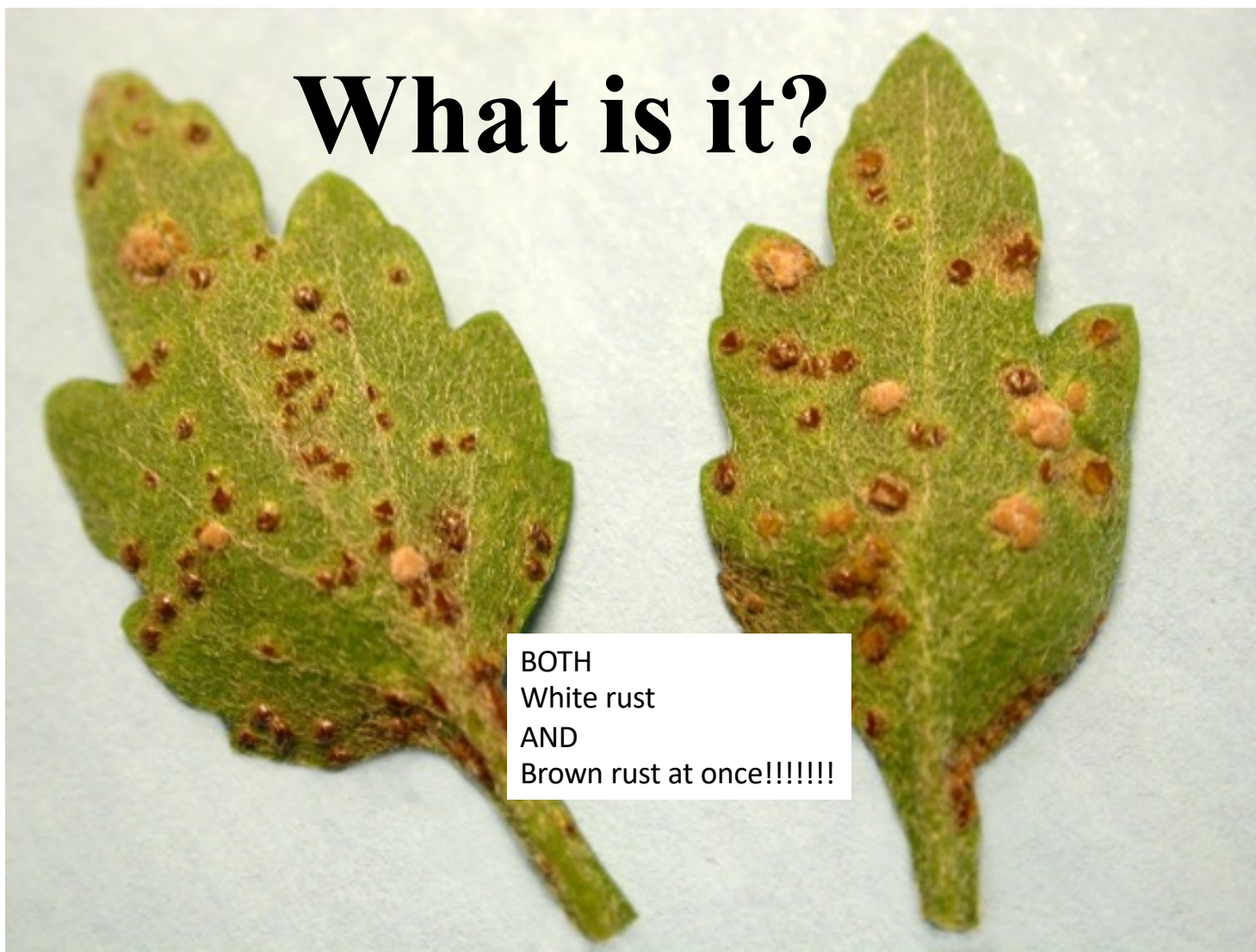
**What is it?**





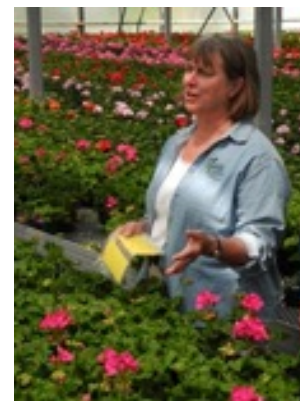
# What is it?

BOTH  
White rust  
AND  
Brown rust at once!!!!!!





Cheryl  
[cfrank@uvm.edu](mailto:cfrank@uvm.edu)



Betsy  
[eml38@cornell.edu](mailto:eml38@cornell.edu)



Margery:  
[mld9@cornell.edu](mailto:mld9@cornell.edu)

## Questions?



John  
[jps3@cornell.edu](mailto:jps3@cornell.edu)



Stephanie  
[sburnett@maine.edu](mailto:sburnett@maine.edu)



Elise  
[ipmelise@gmail.com](mailto:ipmelise@gmail.com)