

Cheryl Frank Sullivan

Research Assistant Professor

University of Vermont

College of Agric. & Life Sciences

Dept. of Agric., Landscape & Environment

Entomology Research Laboratory

(802) 656-5434 | cfrank@uvm.edu

[UVM Entlab](#) | [UVM Ticks](#) | [Faculty Page](#)



Specialize in the Integrated Pest Management (IPM) of key pests in agricultural, landscape and forest settings.



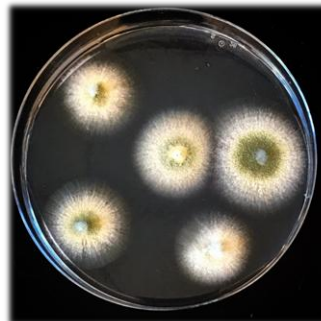
Saffron Production & Pests



Agrovoltaics



Ticks



Entomopathogenic fungi

Primary emphasis on biological control (parasites, predators and pathogens)



Greenhouse & High tunnel pest research (thrips, whiteflies, spider mites) & Extension Outreach



Conservation biological control (habitat plantings for beneficials)

Elizabeth (Betsy) Lamb

Senior Extension Associate

New York State Integrated Pest Management Program

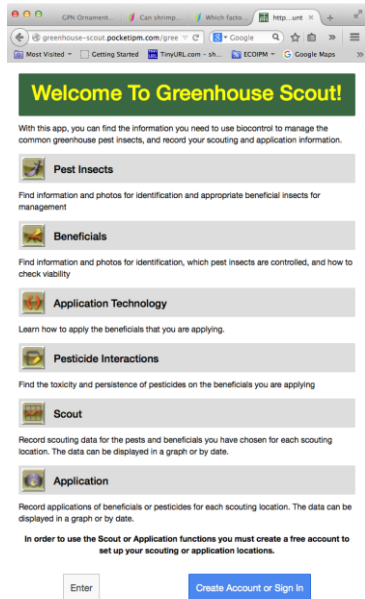
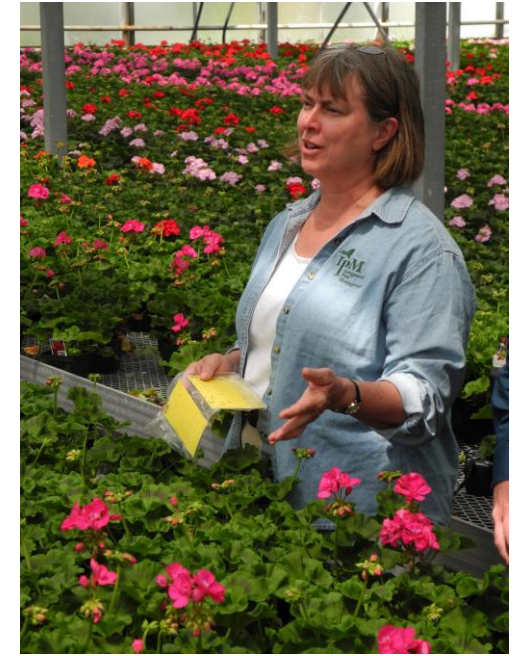
Cornell University

(607) 342-8983

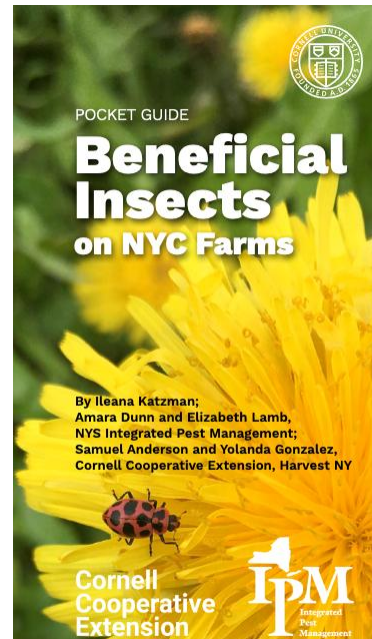
eml38@cornell.edu

[Ornamental IPM](#)

Works with growers in greenhouse, nursery, cut flower, and Christmas tree production to find effective, economical, and environmentally sound methods of pest management



Development of scouting apps



Beneficial insects on urban farms



Beneficial habitat for pest management in production fields



Pest management in Christmas tree establishment

Elise Schillo-Lobdell

The Plant Keeper

ipmelise@gmail.com

Commercial scout for
floriculture and nursery
greenhouses



Calibrachoa with tobamovirus



Erigeron with torradovirus



Stephanie Burnett

Associate Professor of Horticulture

School of Food and Agriculture

University of Maine

(207) 581-2937

sburnett@maine.edu

Works on greenhouse production issues, particularly irrigation, and with field grown cut flowers. Instructor for greenhouse management, herbaceous plant identification, and introduction to horticulture.



Moisture sensor
automated irrigation



Production of
greenhouse crops
(herbs, herbaceous
perennials)



Field grown flowers



Margery Daughtrey

Senior Extension Associate

School of Integrative Pest Management

Section of Plant Pathology and Plant-Microbe Biology

Cornell University

631-727-3595

mld9@cornell.edu

Works on diseases of
greenhouse and nursery
crops, doing extension and
research.



Cleome without downy mildew



Powdery mildew on poinsettia



Downy mildew on impatiens

John Sanderson

Professor Emeritus
Department of Entomology
Cornell University
(607) 255-5419
jps3@cornell.

Works on the biology
and management of
greenhouse pests,
with an emphasis on
biocontrol, doing
extension and
research.



Hunter Fly, *Coenosia attenuata*



Green Peach Aphids



Research



Aphid predator,
Aphidoletes aphidimyza



Whitefly parasitoid, *Eretmocerus eremicus*



Greenhouse Whitefly



Nematode infection of fungus gnat larva