

# Ecology Activity: Spongy Moth and Lyme Disease Population Trends

If 2023 was a **Mast Year** for oak trees, decide how it would affect the 2024 populations of the following organisms and circle the corresponding arrow.

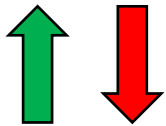
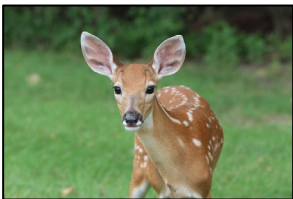


population increases

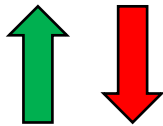


population decreases

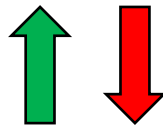
White-tailed deer



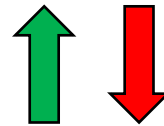
White-footed mouse



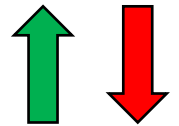
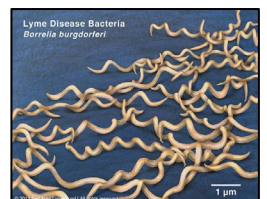
Spongy moth



Black-legged tick



Lyme Disease



If 2023 was a **Non-Mast Year** for oak trees, decide how it would affect the 2024 populations of the following organisms and circle the corresponding arrow.

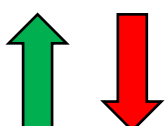
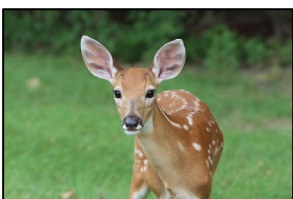


population increases

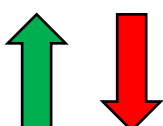


population decreases

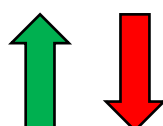
White-tailed deer



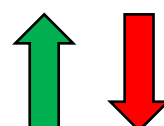
White-footed mouse



Spongy moth



Black-legged tick



Lyme Disease

